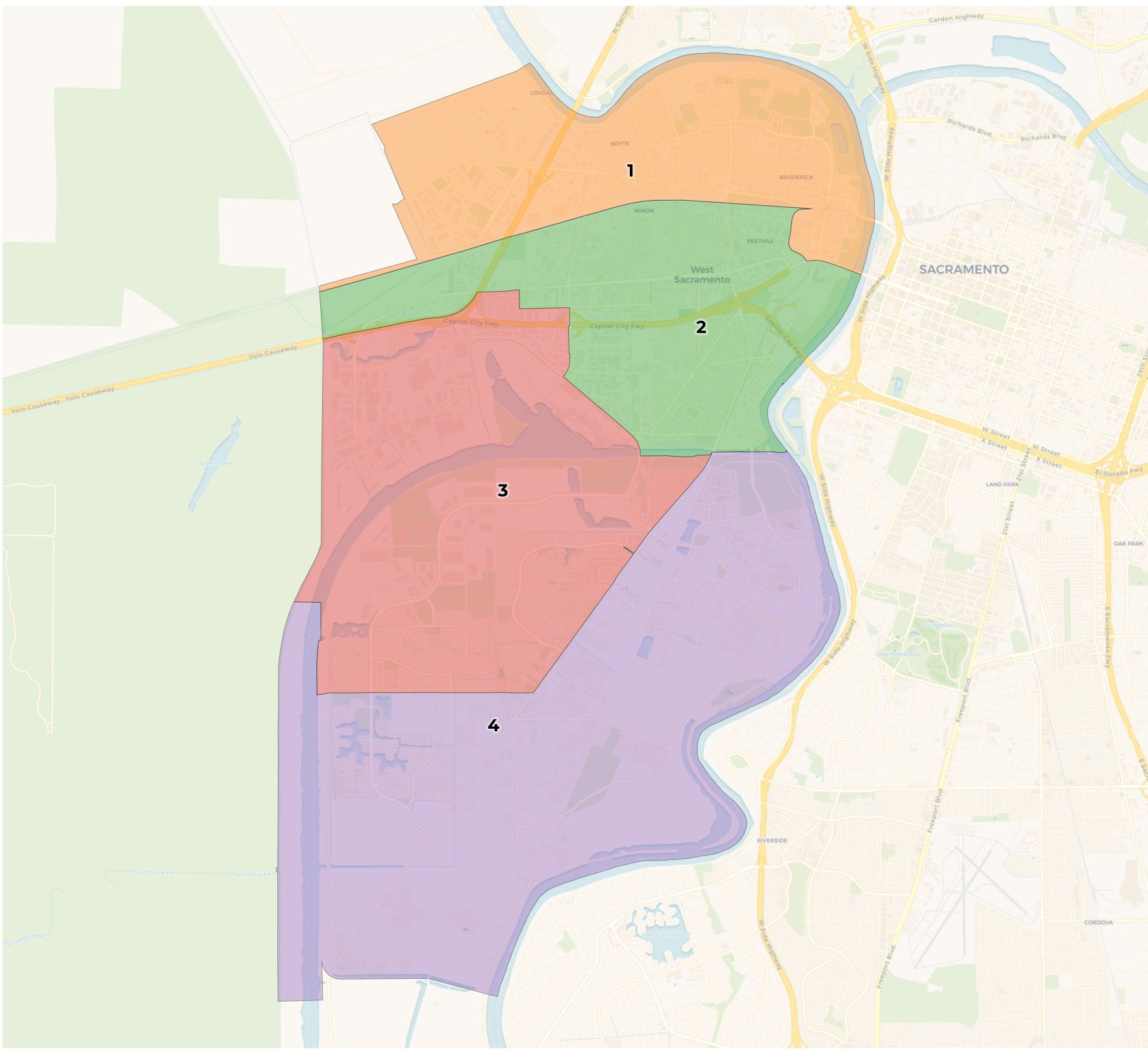


**REDISTRICTING
PARTNERS**

City of West Sacramento
DistrictR ID 117119



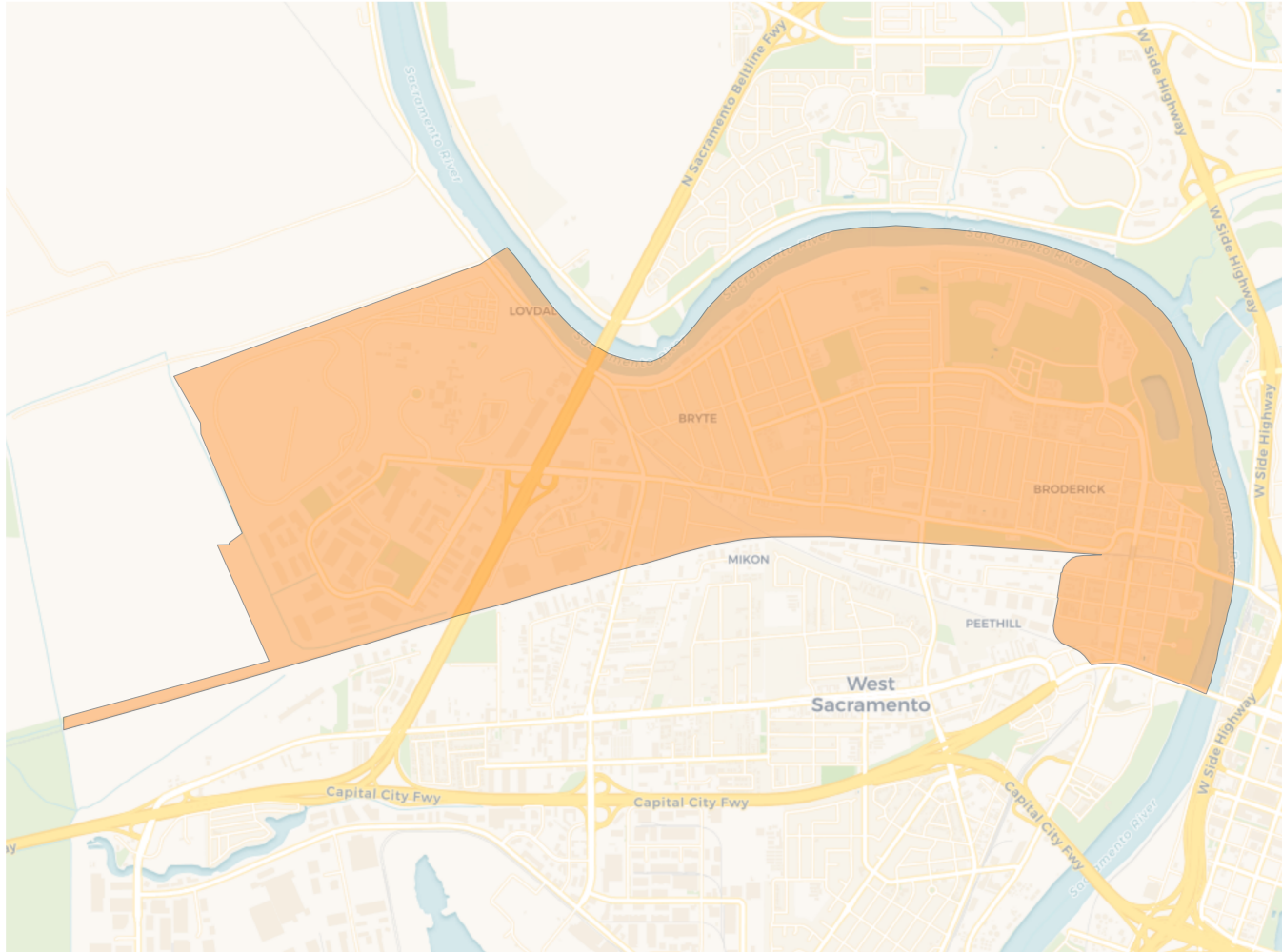
2020 Census

	1	2	3	4
Population	14,228	13,488	13,748	12,613
Deviation	709	-31	229	-906
Deviation %	5.2%	-0.2%	1.7%	-6.7%
Other	6,432	6,375	7,545	6,734
Other %	45.2%	47.3%	54.9%	53.4%
Latino	5,912	5,320	3,480	2,612
Latino %	41.6%	39.4%	25.3%	20.7%
Asian	1,248	1,198	2,007	2,691
Asian %	8.8%	8.9%	14.6%	21.3%
Black	636	595	716	576
Black %	4.5%	4.4%	5.2%	4.6%

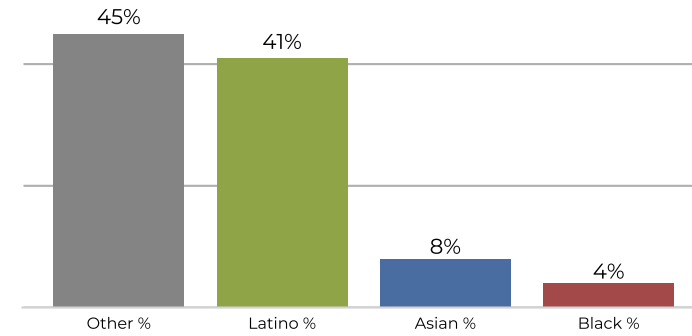
Citizen Voting Age Population (CVAP)

	1	2	3	4
Total CVAP	8,367	8,177	8,764	8,236
Other CVAP	4,608	4,909	6,114	5,018
Other CVAP %	55.1%	60.0%	69.8%	60.9%
Latino CVAP	2,385	2,263	1,491	1,006
Latino CVAP %	28.5%	27.7%	17.0%	12.2%
Asian CVAP	659	506	740	1,775
Asian CVAP %	7.9%	6.2%	8.4%	21.6%
Black CVAP	715	499	419	437
Black CVAP %	8.5%	6.1%	4.8%	5.3%

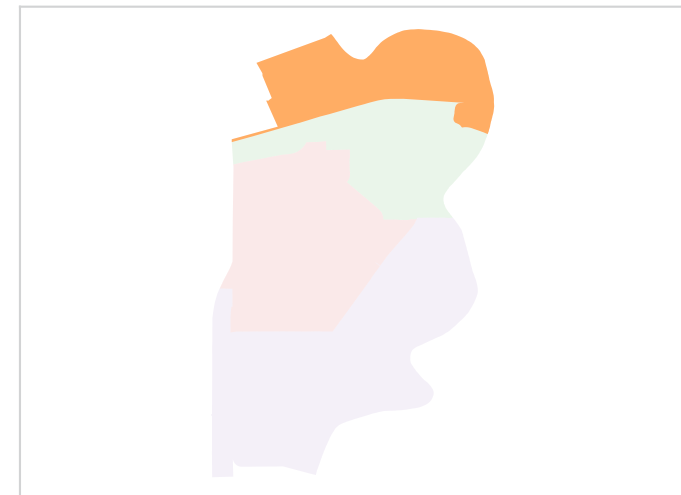
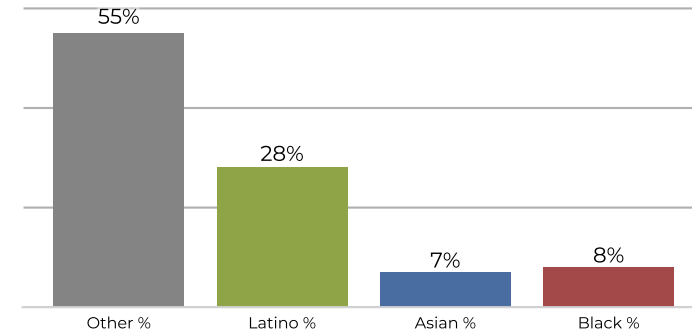
District 1



2020 Census

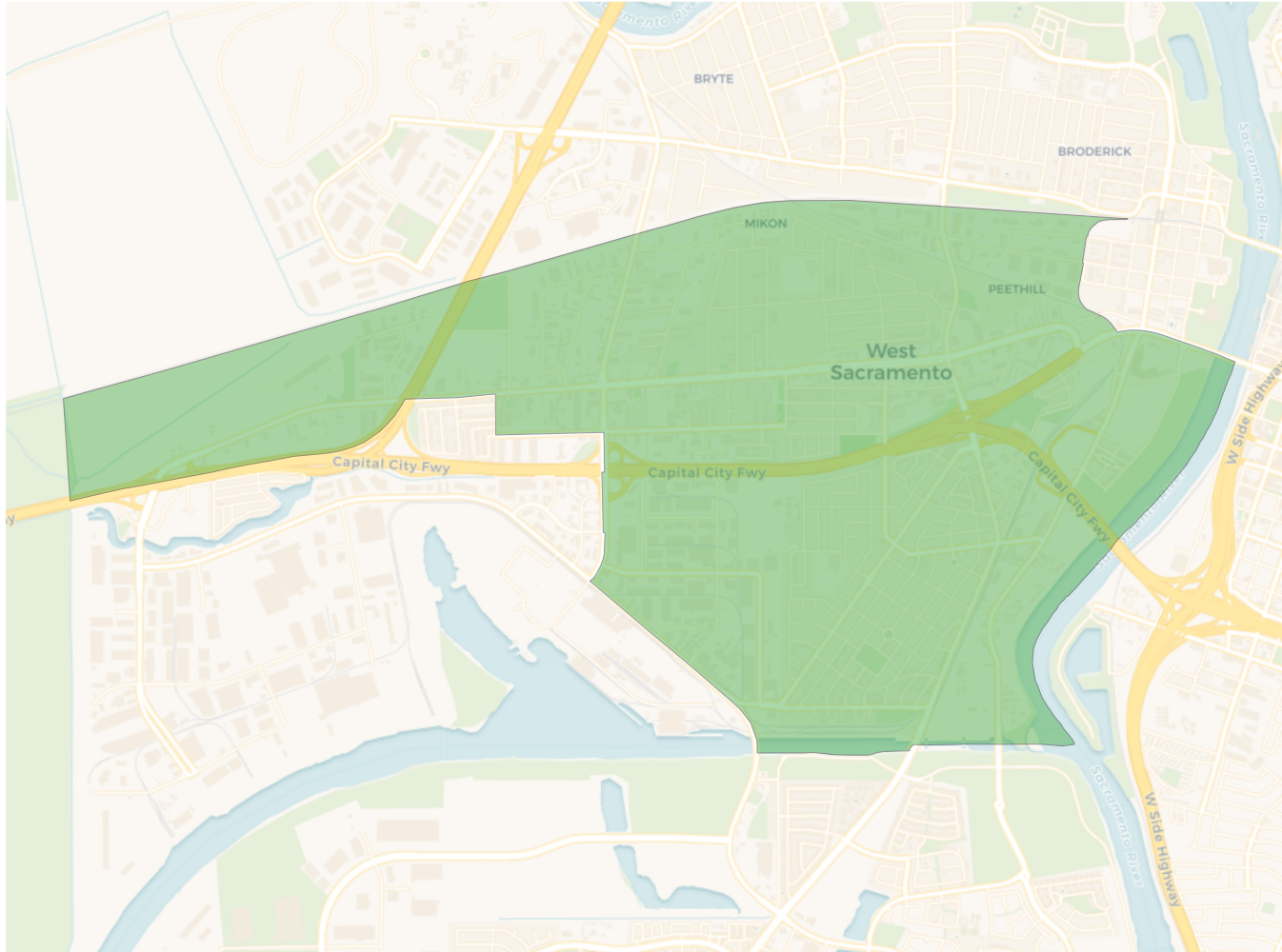


Citizen Voting Age Population

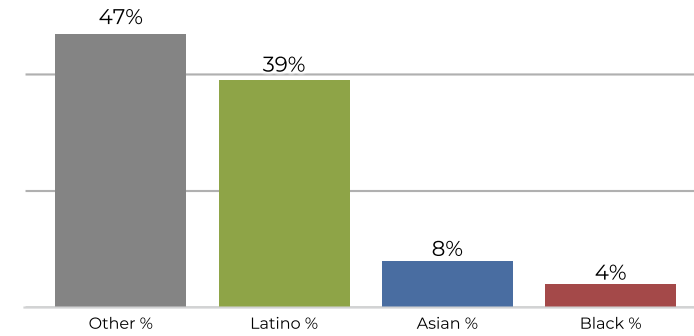


Population	Deviation	Deviation %	Other	Other %	Latino	Latino %	Asian	Asian %	Black	Black %
14,228	709	5.2%	6,432	45.2%	5,912	41.6%	1,248	8.8%	636	4.5%
Total CVAP	Other CVAP	Other CVAP %	Latino CVAP	Latino CVAP %	Asian CVAP	Asian CVAP %	Black CVAP	Black CVAP %		
8,367	4,608	55.1%	2,385	28.5%	659	7.9%	715	8.5%		

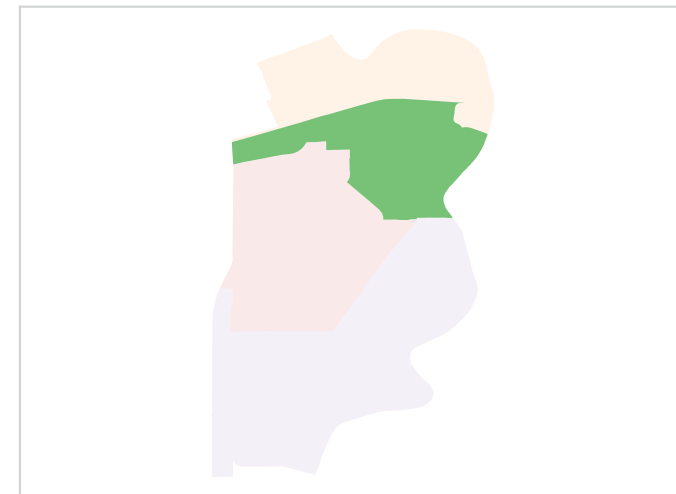
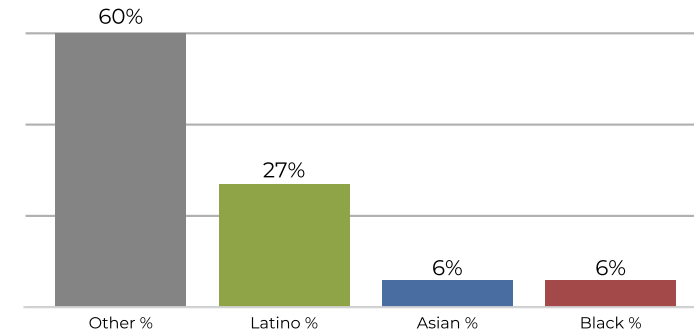
District 2



2020 Census

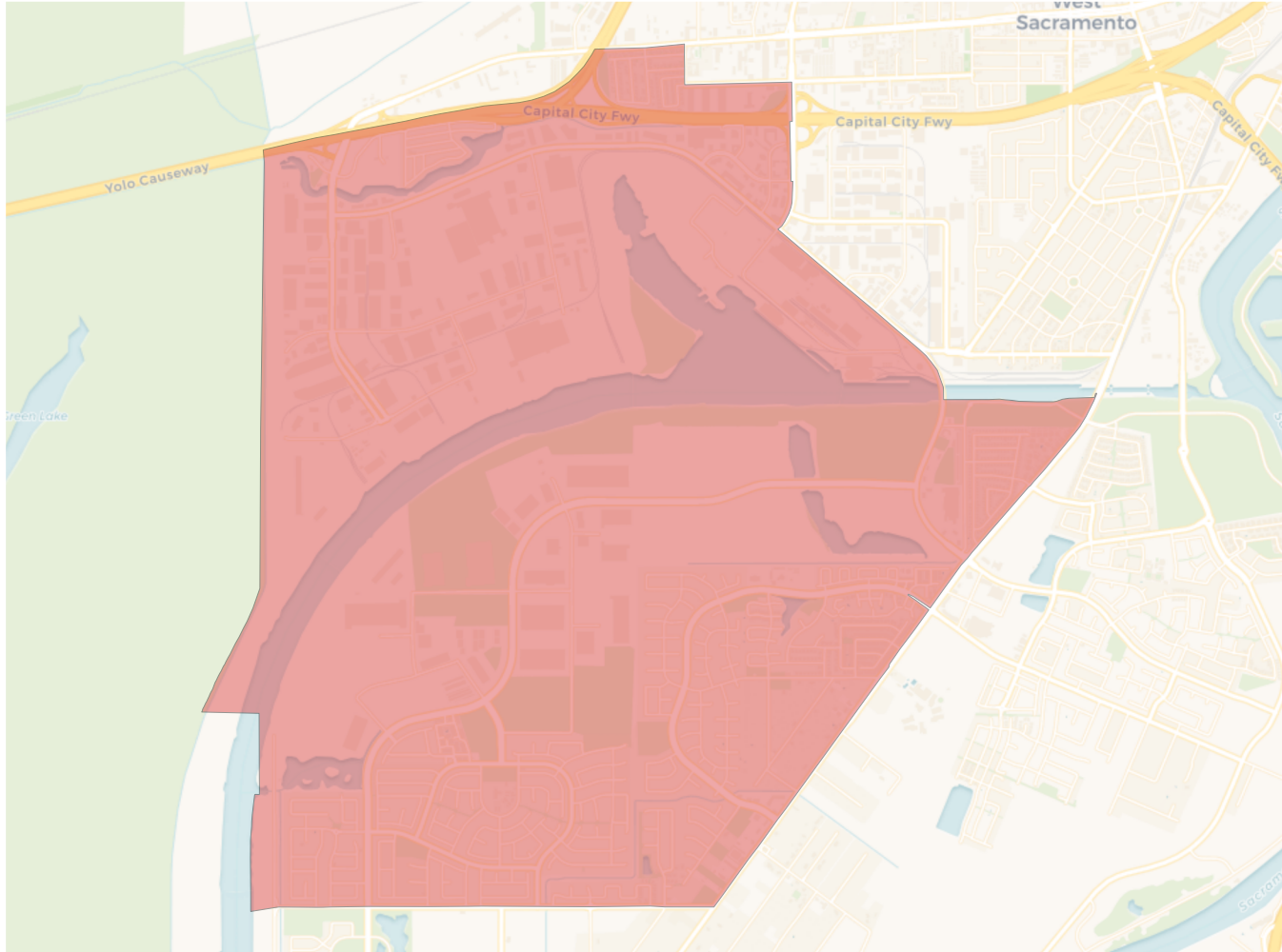


Citizen Voting Age Population

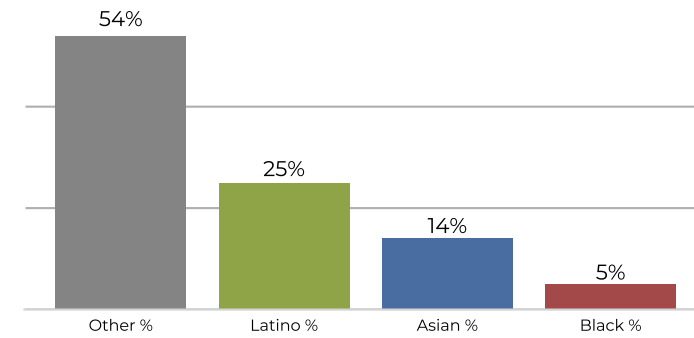


Population	Deviation	Deviation %	Other	Other %	Latino	Latino %	Asian	Asian %	Black	Black %
13,488	-31	-0.2%	6,375	47.3%	5,320	39.4%	1,198	8.9%	595	4.4%
Total CVAP	Other CVAP	Other CVAP %	Latino CVAP	Latino CVAP %	Asian CVAP	Asian CVAP %	Black CVAP	Black CVAP %		
8,177	4,909	60.0%	2,263	27.7%	506	6.2%	499	6.1%		

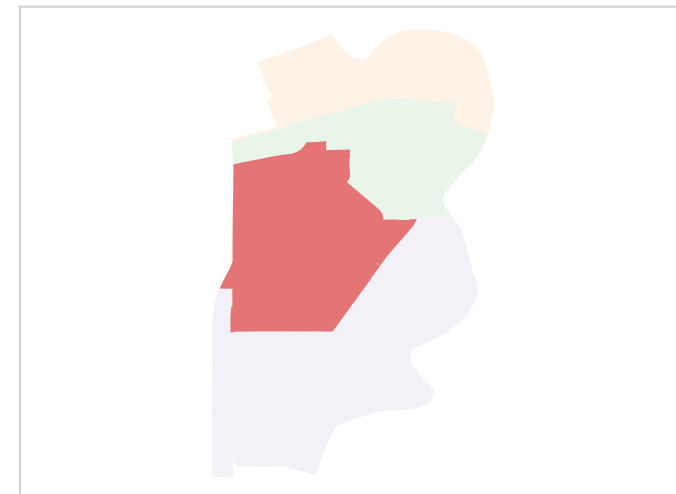
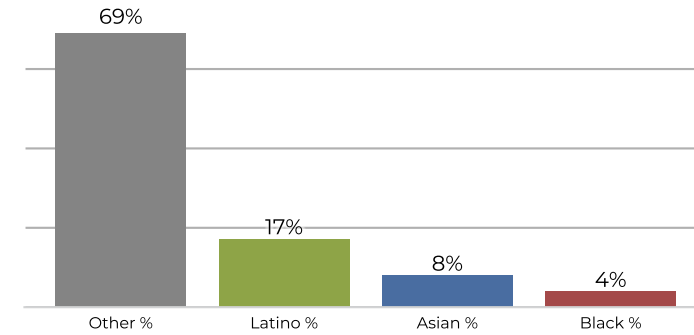
District 3



2020 Census

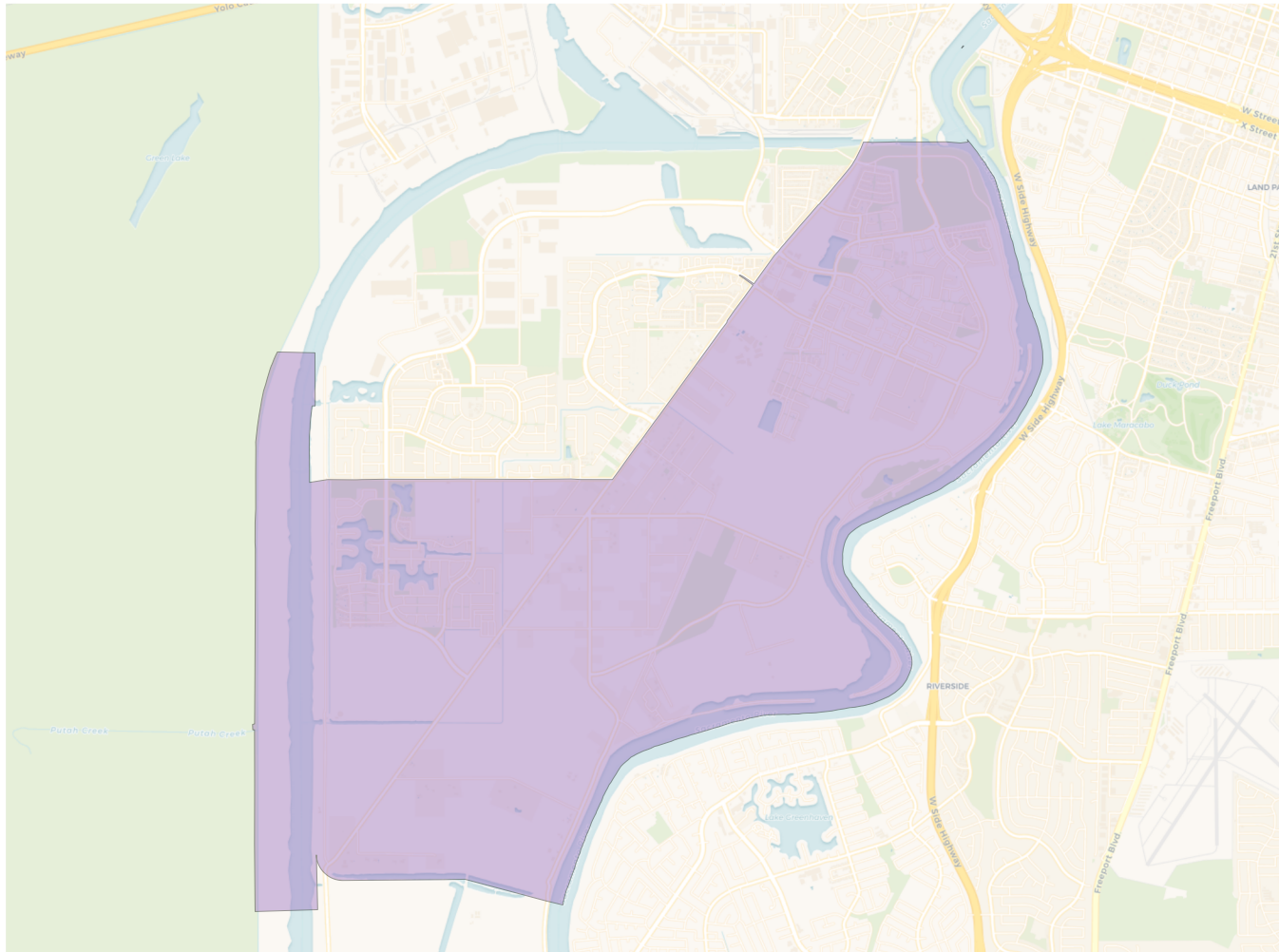


Citizen Voting Age Population

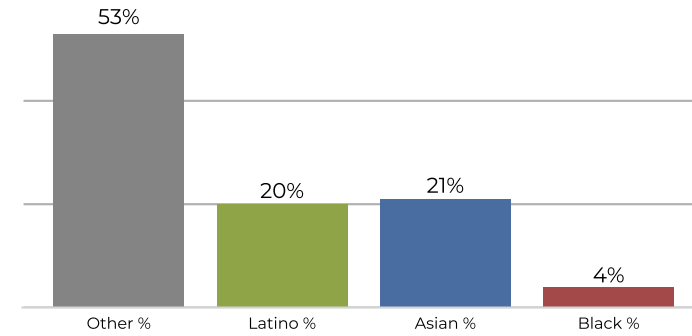


Population	Deviation	Deviation %	Other	Other %	Latino	Latino %	Asian	Asian %	Black	Black %
13,748	229	1.7%	7,545	54.9%	3,480	25.3%	2,007	14.6%	716	5.2%
Total CVAP	Other CVAP	Other CVAP %	Latino CVAP	Latino CVAP %	Asian CVAP	Asian CVAP %	Black CVAP	Black CVAP %		
8,764	6,114	69.8%	1,491	17.0%	740	8.4%	419	4.8%		

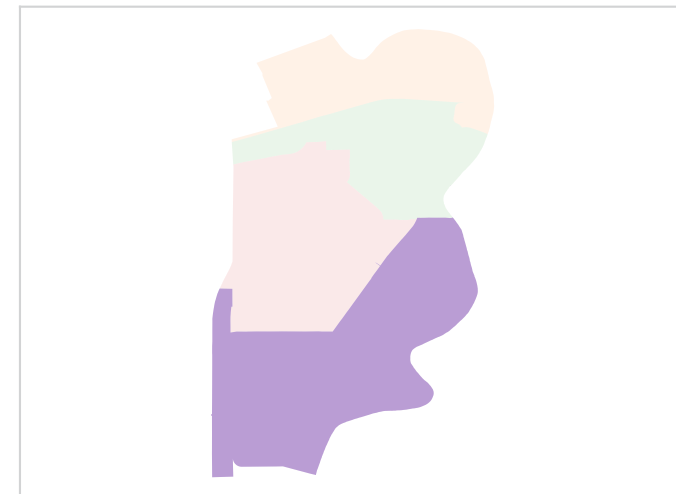
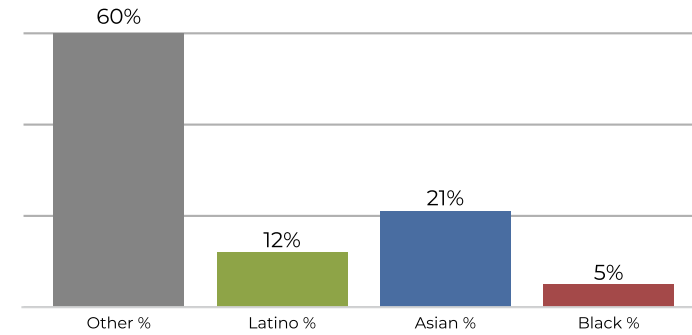
District 4



2020 Census



Citizen Voting Age Population



Population	Deviation	Deviation %	Other	Other %	Latino	Latino %	Asian	Asian %	Black	Black %
12,613	-906	-6.7%	6,734	53.4%	2,612	20.7%	2,691	21.3%	576	4.6%
Total CVAP	Other CVAP	Other CVAP %	Latino CVAP	Latino CVAP %	Asian CVAP	Asian CVAP %	Black CVAP	Black CVAP %		
8,236	5,018	60.9%	1,006	12.2%	1,775	21.6%	437	5.3%		