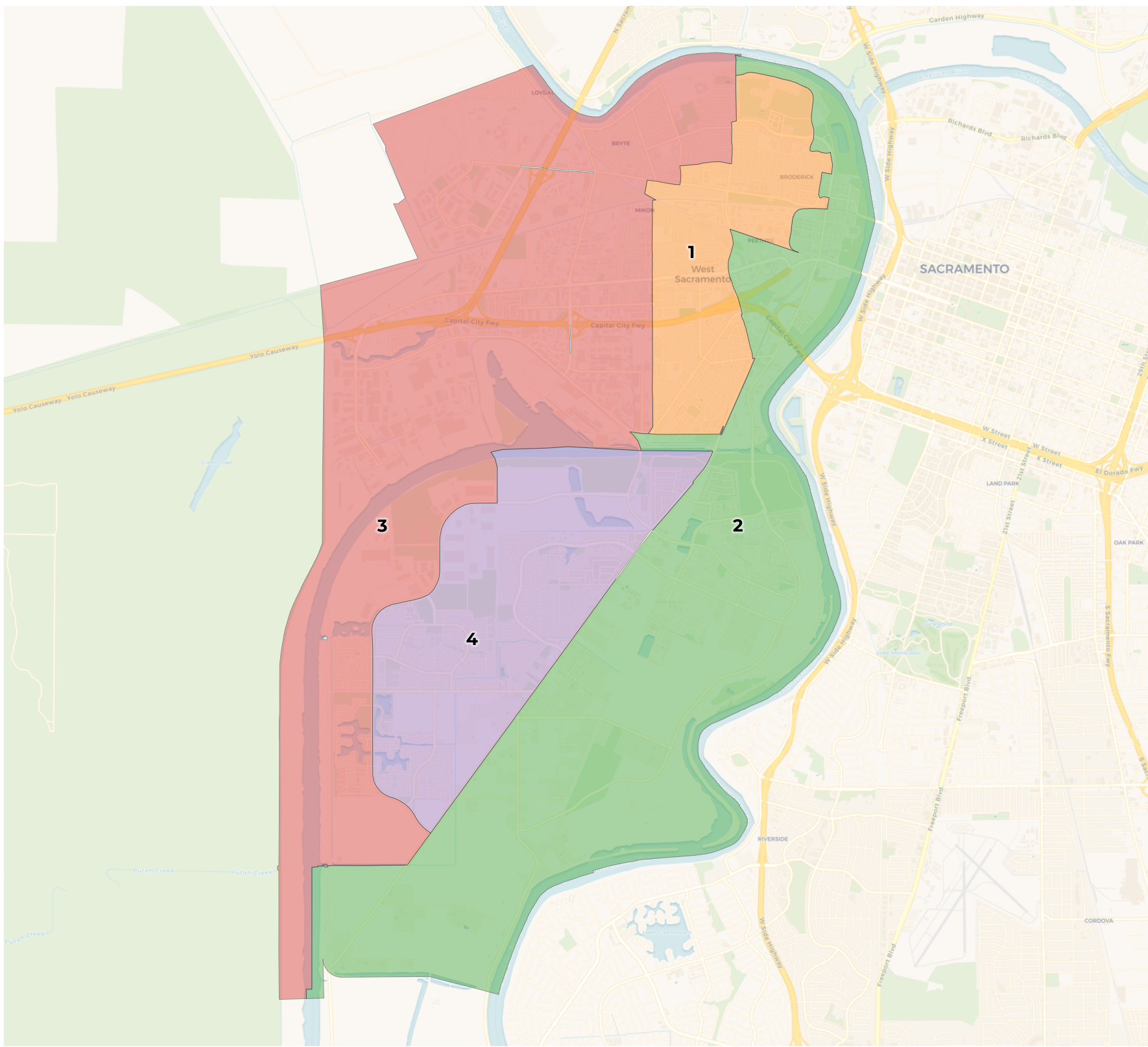


**REDISTRICTING
PARTNERS**

City of West Sacramento

DistrictR ID 118923

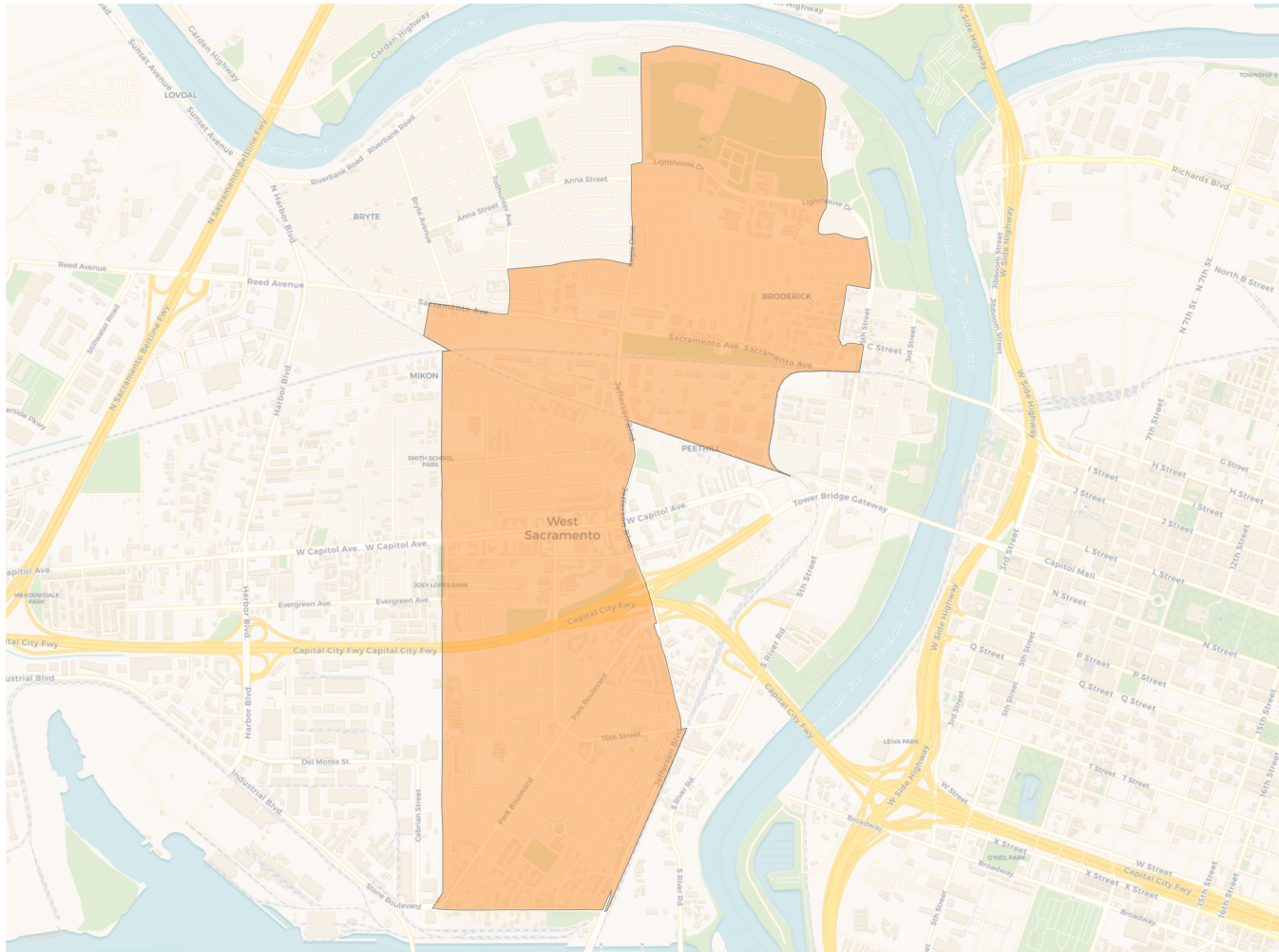
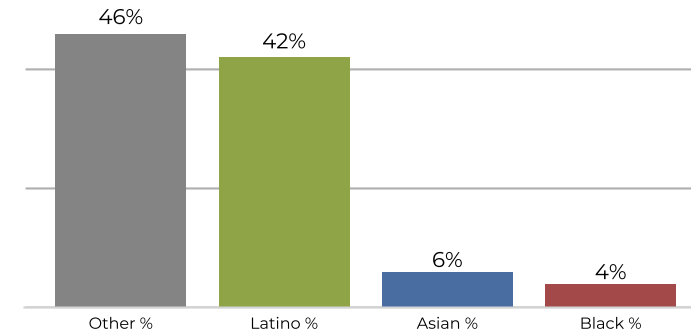
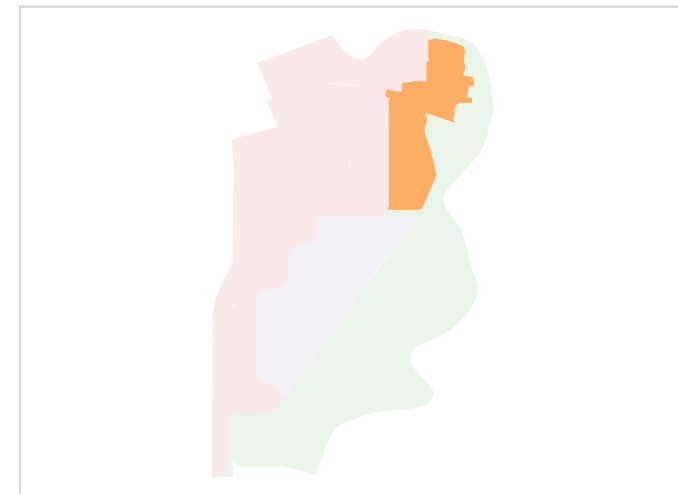
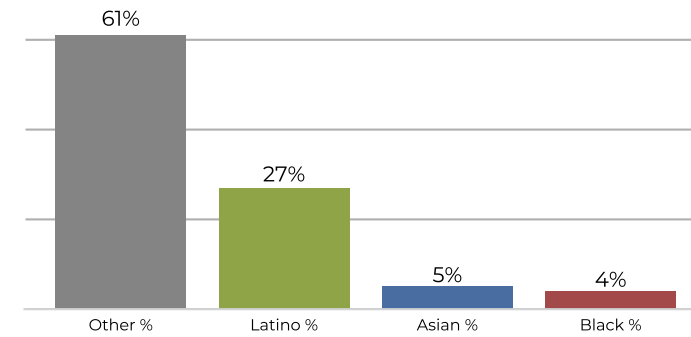


2020 Census

	1	2	3	4
Population	13,522	13,193	13,620	13,742
Deviation	3	-326	101	223
Deviation %	0.0%	-2.4%	0.7%	1.6%
Other	6,317	7,018	6,277	7,474
Other %	46.7%	53.2%	46.1%	54.4%
Latino	5,752	3,116	5,294	3,162
Latino %	42.5%	23.6%	38.9%	23.0%
Asian	918	2,421	1,476	2,329
Asian %	6.8%	18.4%	10.8%	16.9%
Black	535	638	573	777
Black %	4.0%	4.8%	4.2%	5.7%

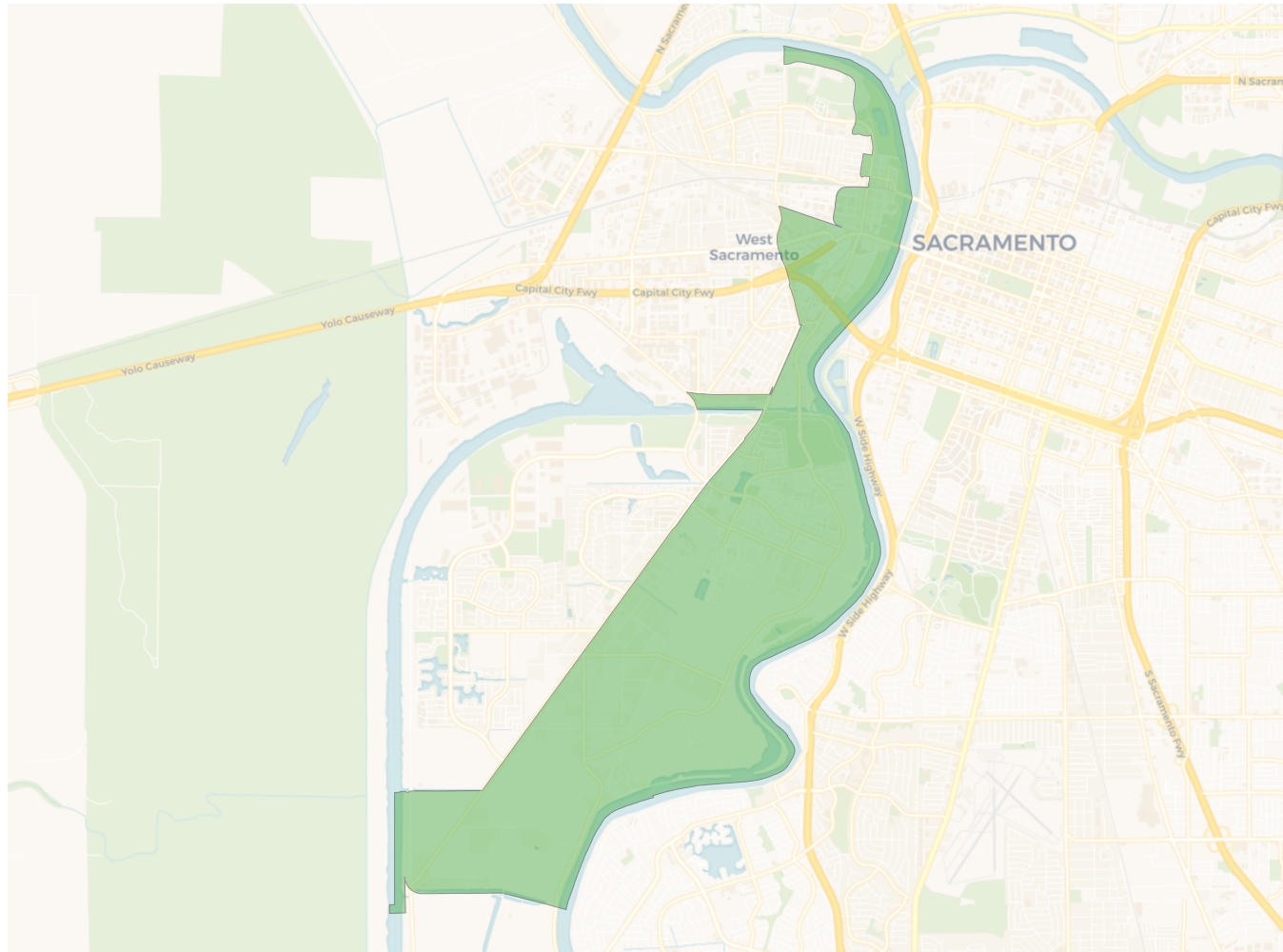
Citizen Voting Age Population (CVAP)

	1	2	3	4
Total CVAP	8,297	8,207	7,750	9,290
Other CVAP	5,134	5,107	4,340	6,068
Other CVAP %	61.9%	62.2%	56.0%	65.3%
Latino CVAP	2,288	1,229	2,063	1,565
Latino CVAP %	27.6%	15.0%	26.6%	16.8%
Asian CVAP	472	1,461	681	1,066
Asian CVAP %	5.7%	17.8%	8.8%	11.5%
Black CVAP	403	410	666	591
Black CVAP %	4.9%	5.0%	8.6%	6.4%

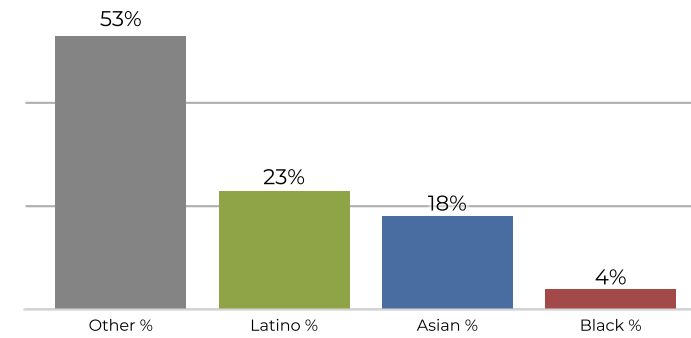
District 1

2020 Census

Citizen Voting Age Population


Population	Deviation	Deviation %	Other	Other %	Latino	Latino %	Asian	Asian %	Black	Black %
13,522	3	0.0%	6,317	46.7%	5,752	42.5%	918	6.8%	535	4.0%
Total CVAP	Other CVAP	Other CVAP %	Latino CVAP	Latino CVAP %	Asian CVAP	Asian CVAP %	Black CVAP	Black CVAP %		
8,297	5,134	61.9%	2,288	27.6%	472	5.7%	403	4.9%		

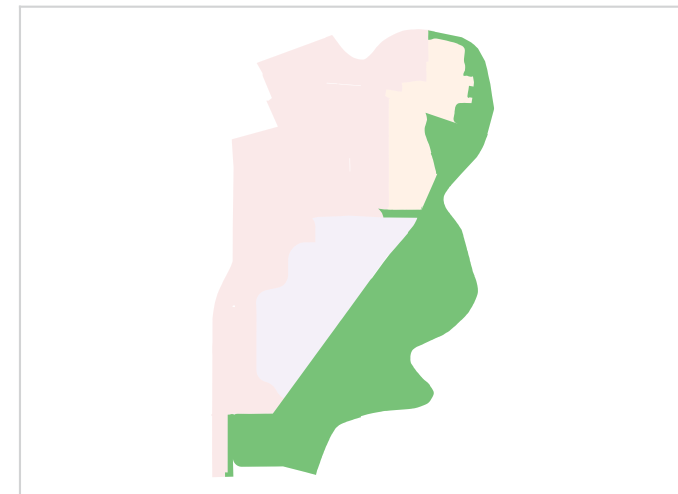
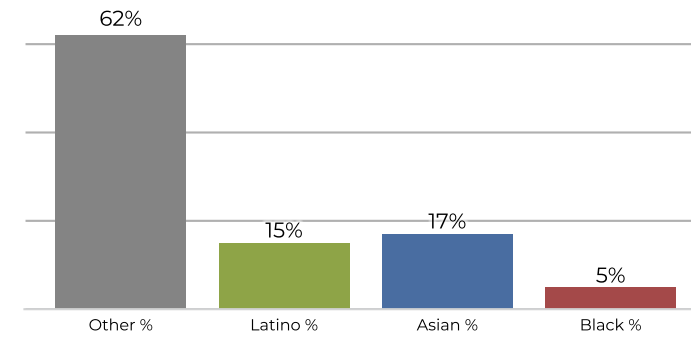
District 2



2020 Census

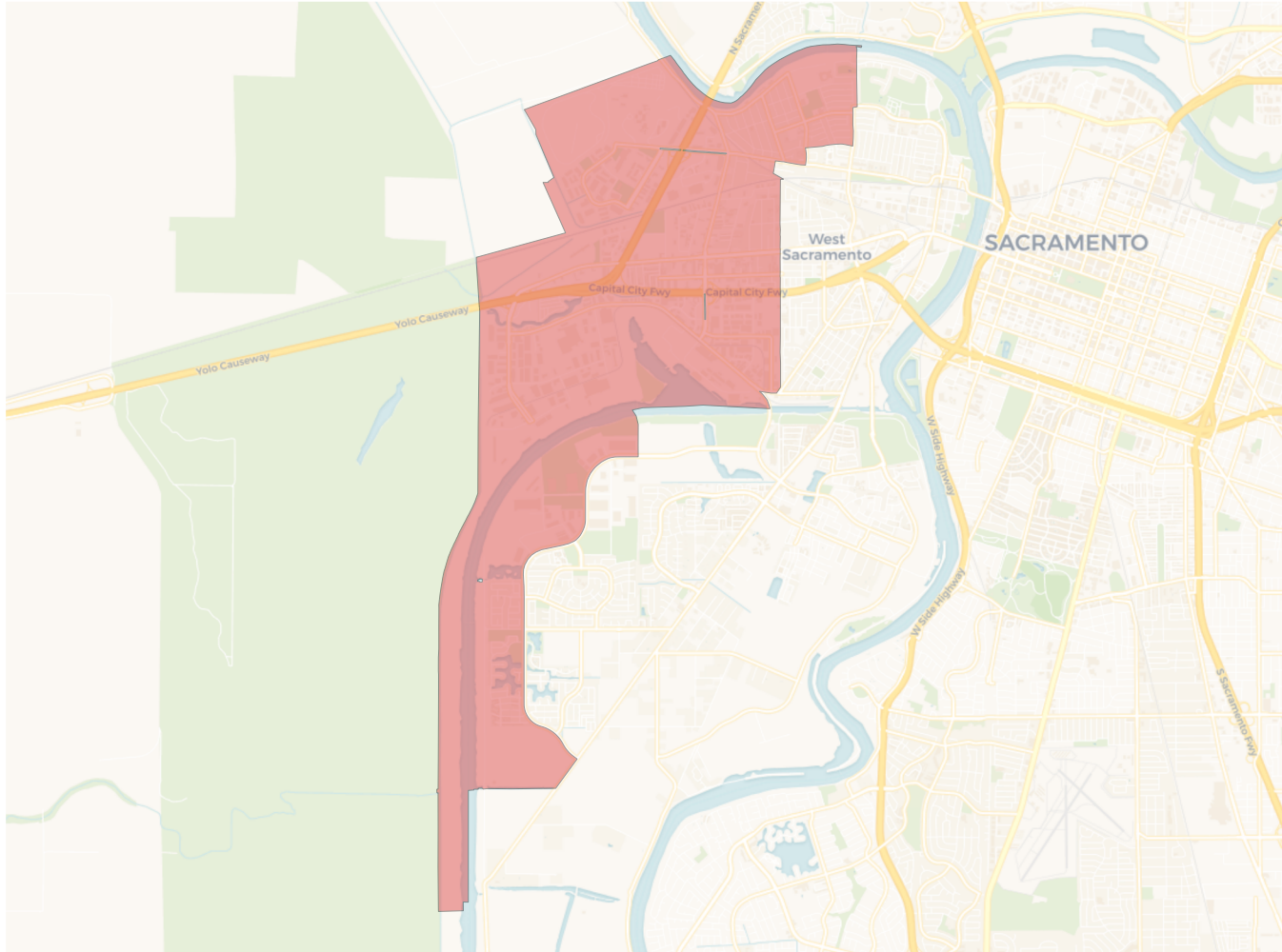


Citizen Voting Age Population

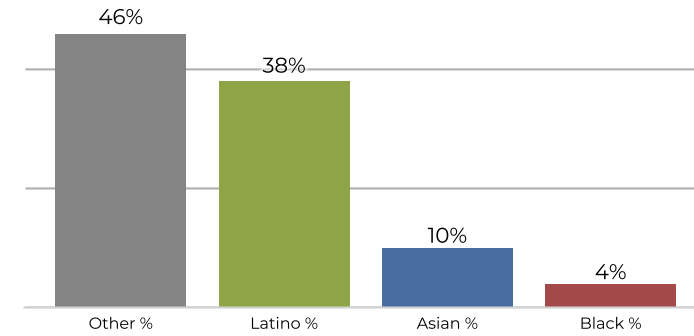


Population	Deviation	Deviation %	Other	Other %	Latino	Latino %	Asian	Asian %	Black	Black %
13,193	-326	-2.4%	7,018	53.2%	3,116	23.6%	2,421	18.4%	638	4.8%
Total CVAP	Other CVAP	Other CVAP %	Latino CVAP	Latino CVAP %	Asian CVAP	Asian CVAP %	Black CVAP	Black CVAP %		
8,207	5,107	62.2%	1,229	15.0%	1,461	17.8%	410	5.0%		

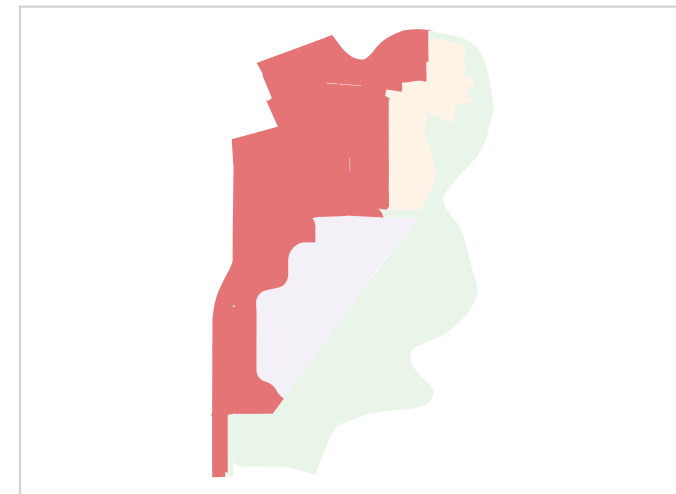
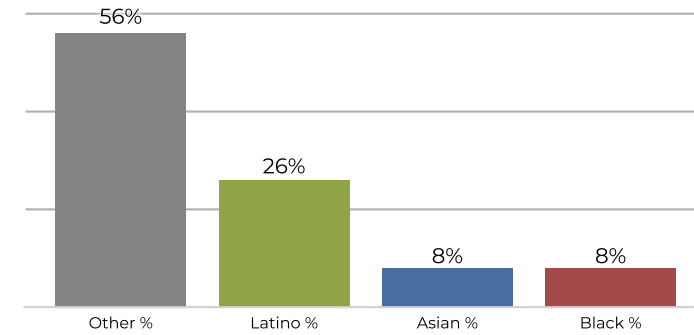
District 3



2020 Census

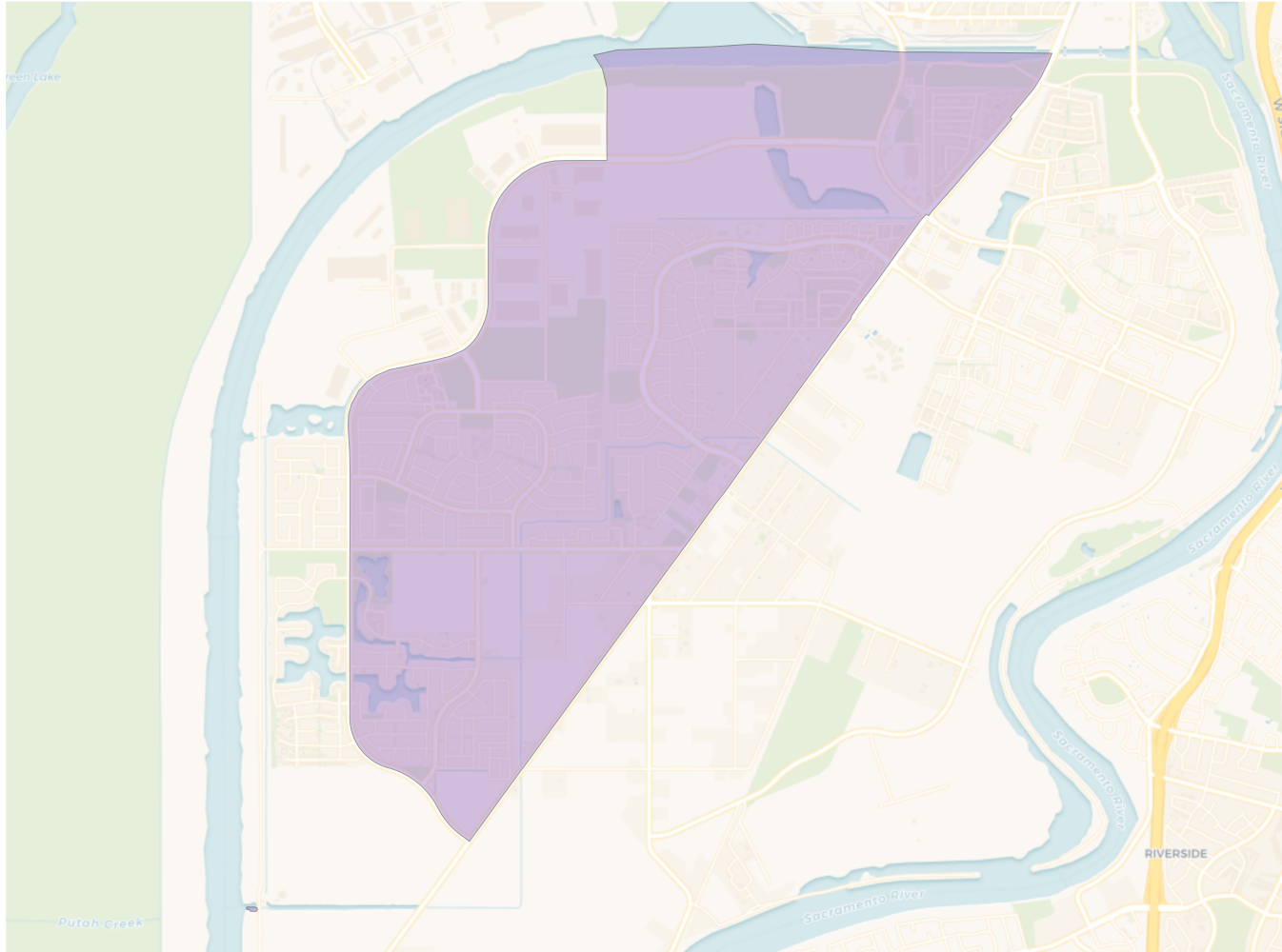


Citizen Voting Age Population

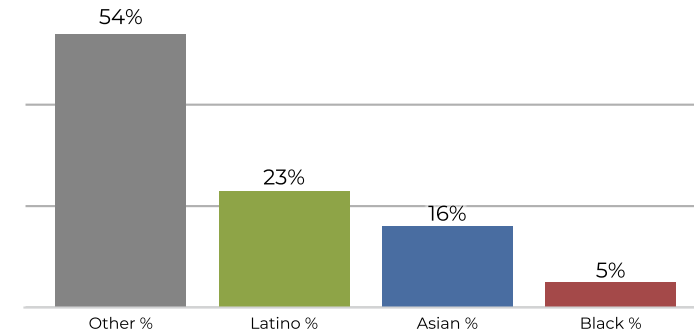


Population	Deviation	Deviation %	Other	Other %	Latino	Latino %	Asian	Asian %	Black	Black %
13,620	101	0.7%	6,277	46.1%	5,294	38.9%	1,476	10.8%	573	4.2%
Total CVAP	Other CVAP	Other CVAP %	Latino CVAP	Latino CVAP %	Asian CVAP	Asian CVAP %	Black CVAP	Black CVAP %		
7,750	4,340	56.0%	2,063	26.6%	681	8.8%	666	8.6%		

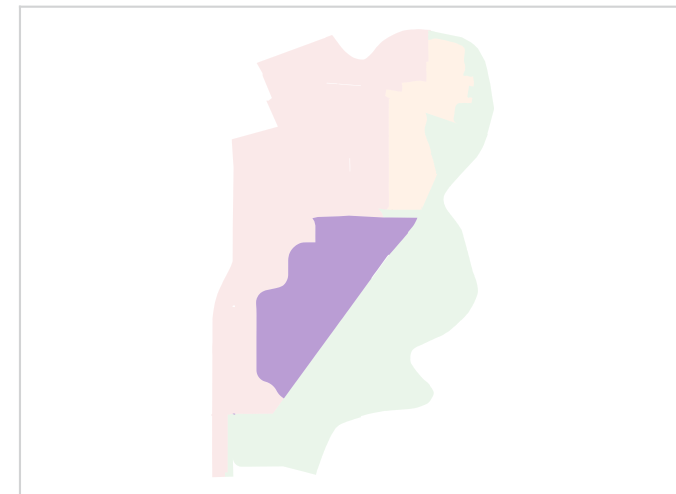
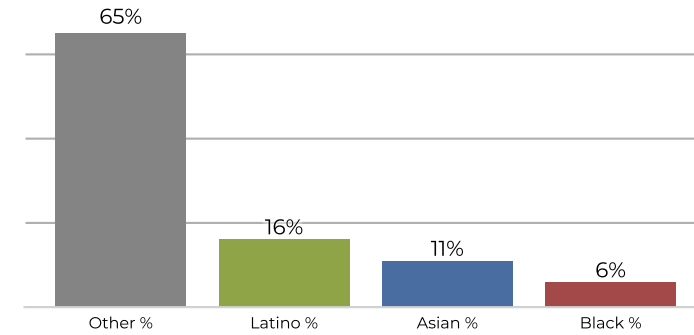
District 4



2020 Census



Citizen Voting Age Population



Population	Deviation	Deviation %	Other	Other %	Latino	Latino %	Asian	Asian %	Black	Black %
13,742	223	1.6%	7,474	54.4%	3,162	23.0%	2,329	16.9%	777	5.7%
Total CVAP	Other CVAP	Other CVAP %	Latino CVAP	Latino CVAP %	Asian CVAP	Asian CVAP %	Black CVAP	Black CVAP %		
9,290	6,068	65.3%	1,565	16.8%	1,066	11.5%	591	6.4%		