

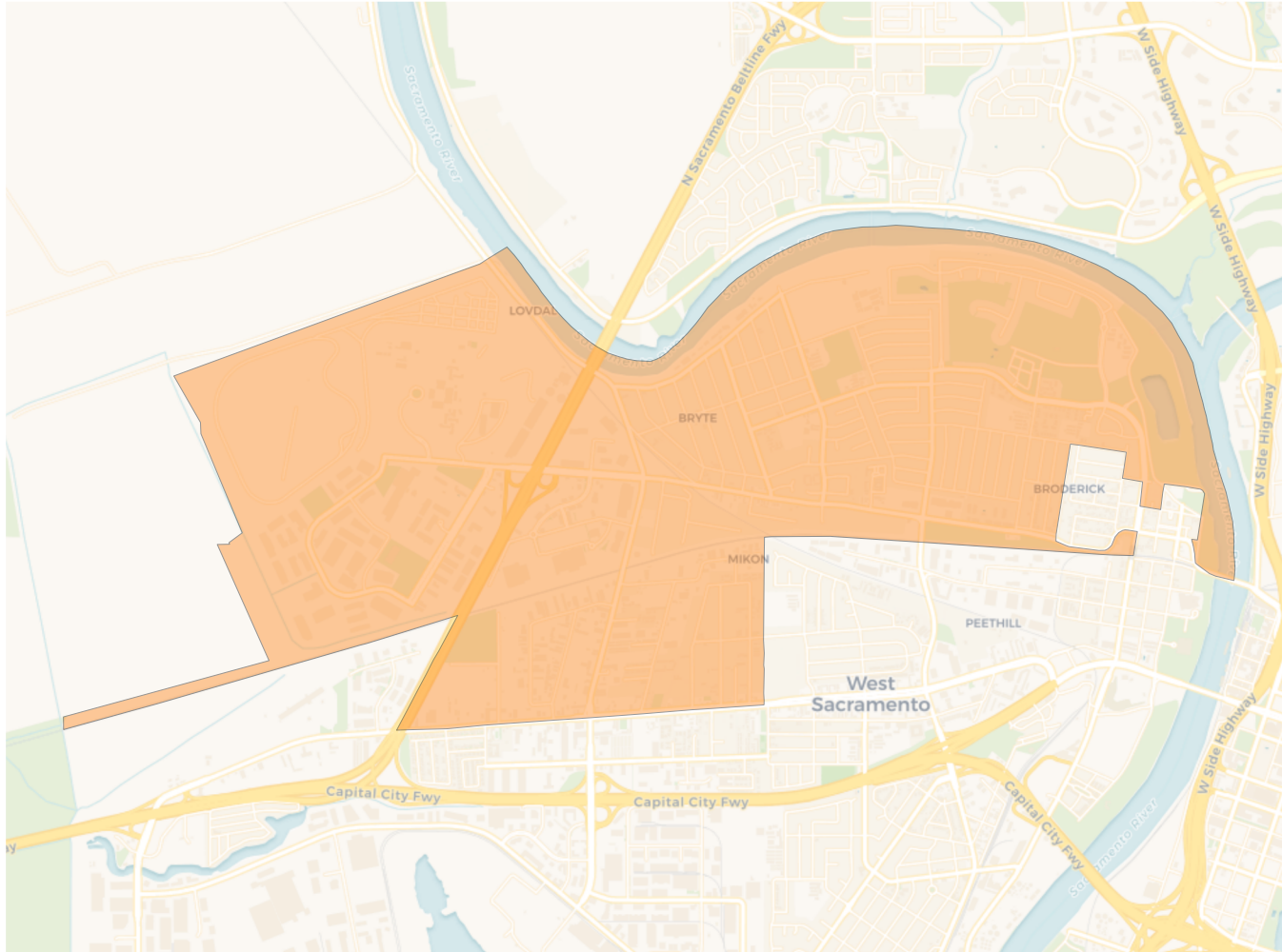
2020 Census

	A	B	C	D
Population	13,408	13,279	13,512	13,878
Deviation	-111	-240	-7	359
Deviation %	-0.8%	-1.8%	-0.1%	2.7%
Other	5,837	6,693	7,226	7,330
Other %	43.5%	50.4%	53.5%	52.8%
Latino	6,078	4,769	2,845	3,632
Latino %	45.3%	35.9%	21.1%	26.2%
Asian	1,036	1,167	2,824	2,117
Asian %	7.7%	8.8%	20.9%	15.3%
Black	457	650	617	799
Black %	3.4%	4.9%	4.6%	5.8%

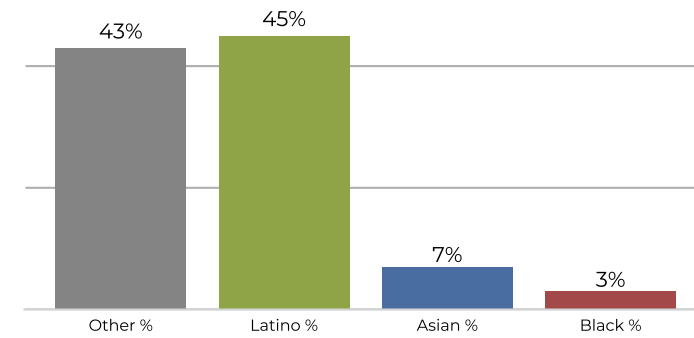
Citizen Voting Age Population (CVAP)

	A	B	C	D
Total CVAP	7,928	8,343	8,742	8,531
Other CVAP	4,208	5,287	5,387	5,767
Other CVAP %	53.1%	63.4%	61.6%	67.6%
Latino CVAP	2,361	2,222	1,051	1,511
Latino CVAP %	29.8%	26.6%	12.0%	17.7%
Asian CVAP	689	461	1,834	696
Asian CVAP %	8.7%	5.5%	21.0%	8.2%
Black CVAP	670	373	470	557
Black CVAP %	8.5%	4.5%	5.4%	6.5%

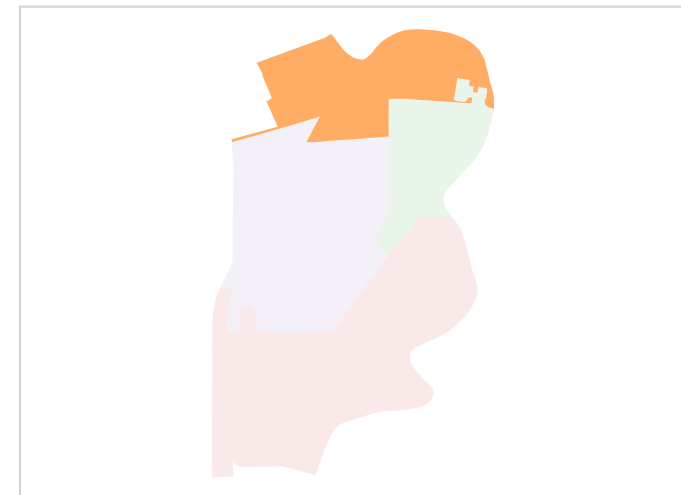
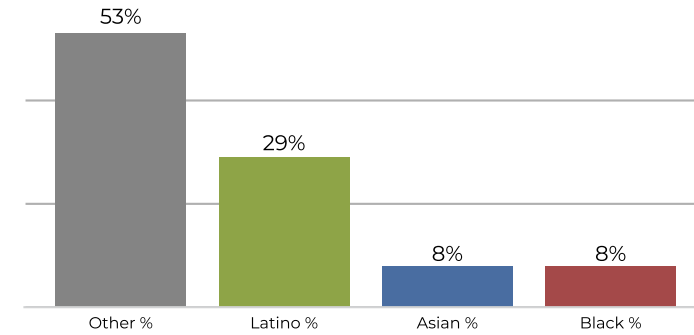
District A



2020 Census

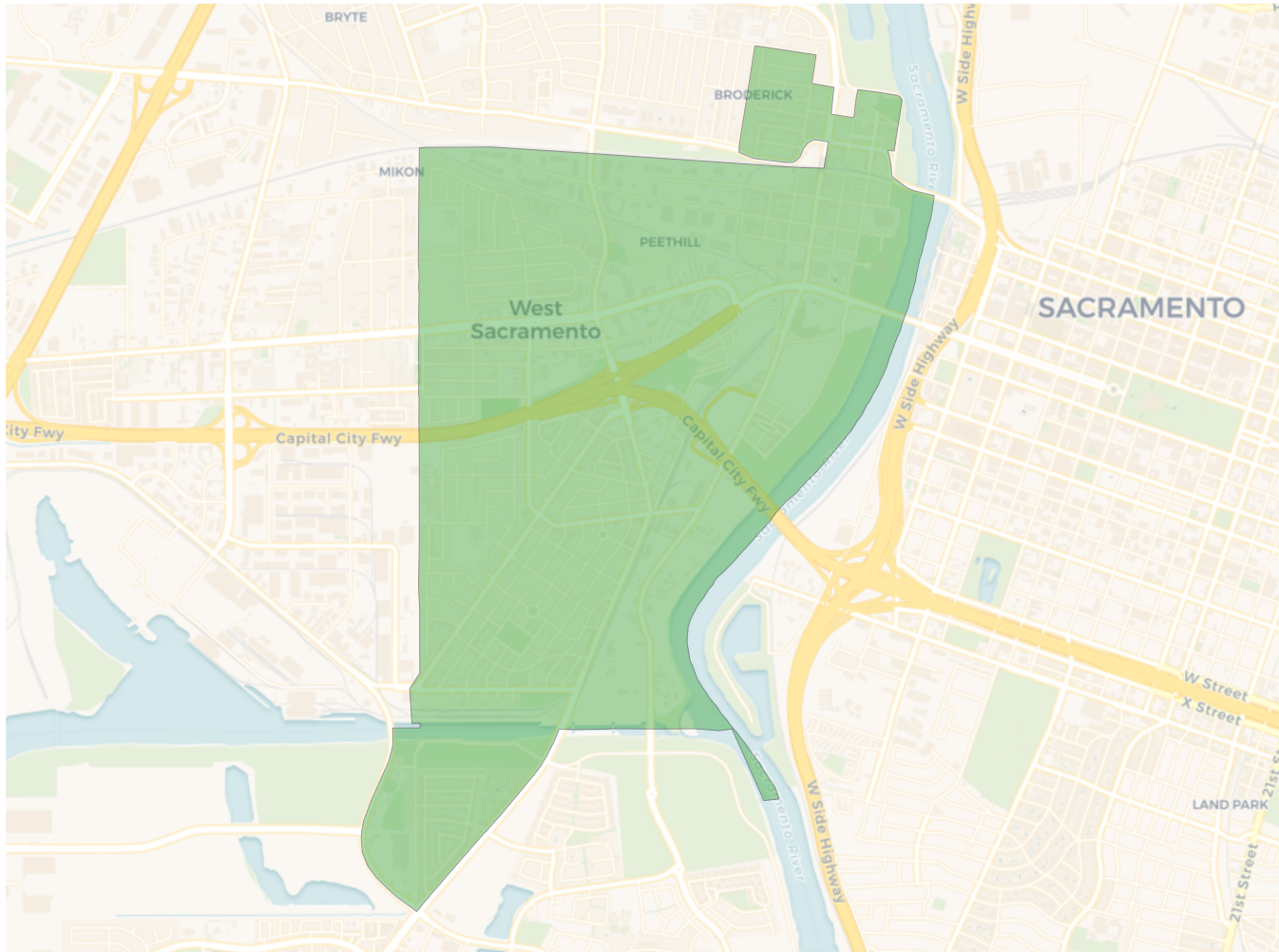


Citizen Voting Age Population

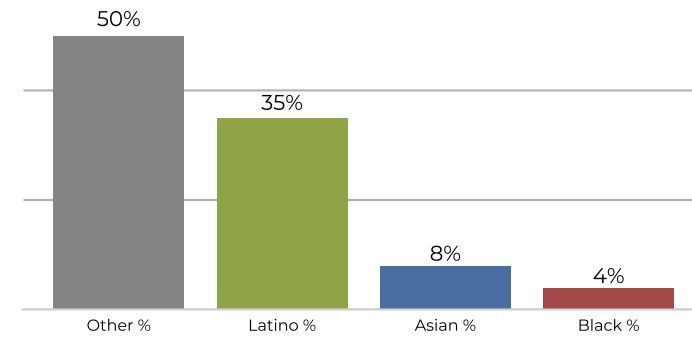


Population	Deviation	Deviation %	Other	Other %	Latino	Latino %	Asian	Asian %	Black	Black %
13,408	-111	-0.8%	5,837	43.5%	6,078	45.3%	1,036	7.7%	457	3.4%
Total CVAP	Other CVAP	Other CVAP %	Latino CVAP	Latino CVAP %	Asian CVAP	Asian CVAP %	Black CVAP	Black CVAP %		
7,928	4,208	53.1%	2,361	29.8%	689	8.7%	670	8.5%		

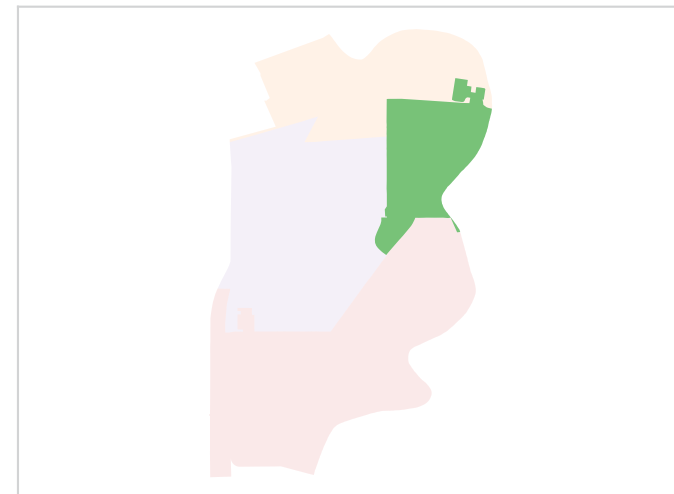
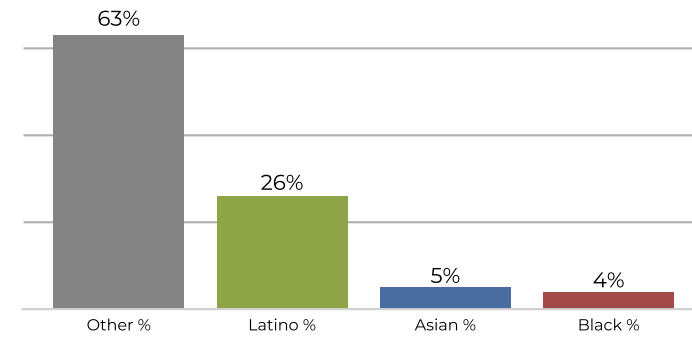
District B



2020 Census

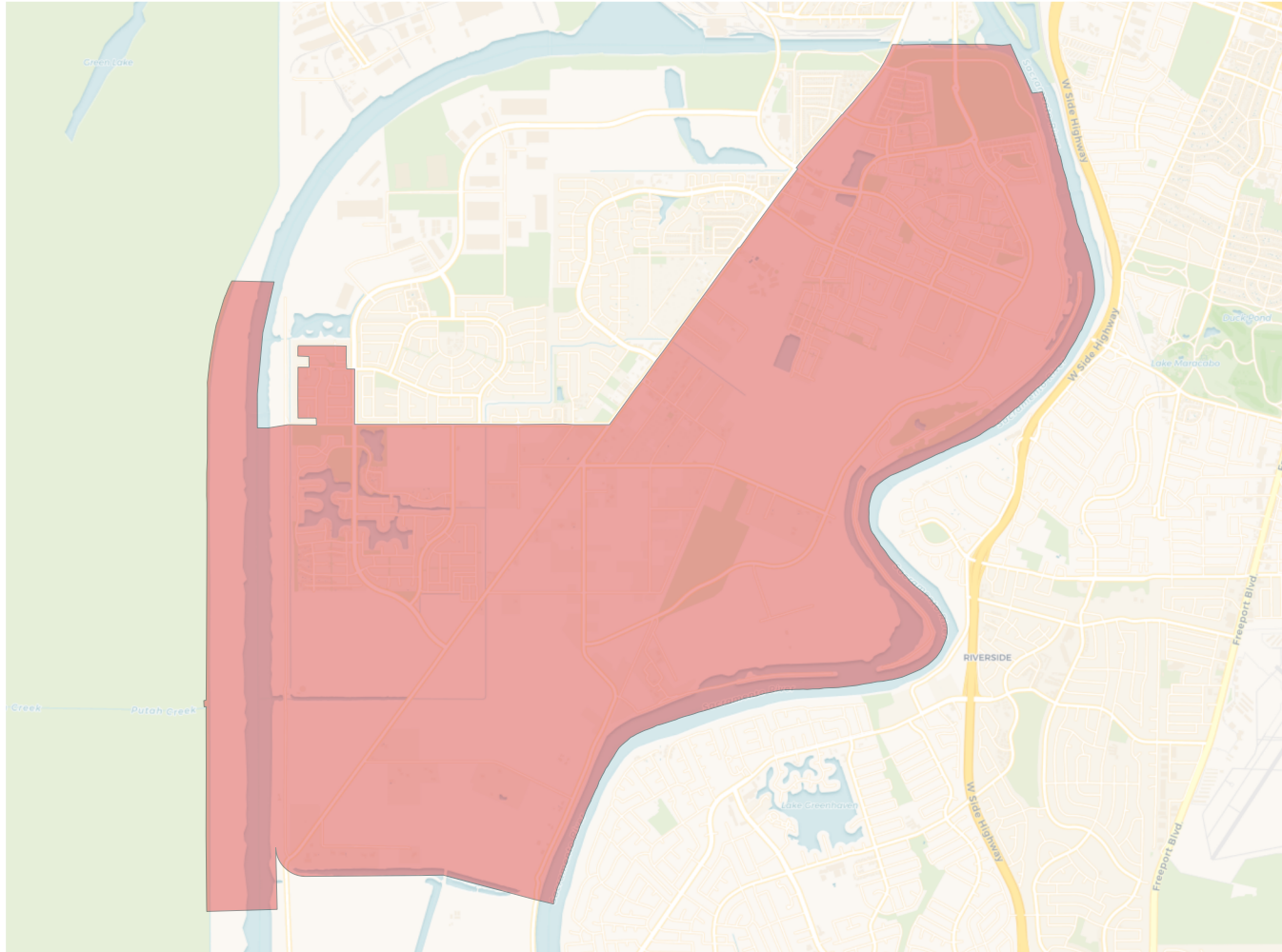


Citizen Voting Age Population

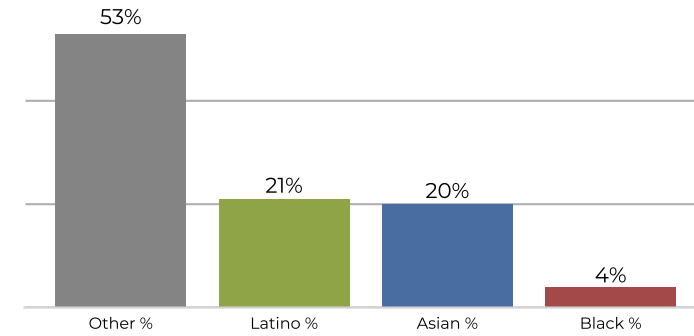


Population	Deviation	Deviation %	Other	Other %	Latino	Latino %	Asian	Asian %	Black	Black %
13,279	-240	-1.8%	6,693	50.4%	4,769	35.9%	1,167	8.8%	650	4.9%
Total CVAP	Other CVAP	Other CVAP %	Latino CVAP	Latino CVAP %	Asian CVAP	Asian CVAP %	Black CVAP	Black CVAP %		
8,343	5,287	63.4%	2,222	26.6%	461	5.5%	373	4.5%		

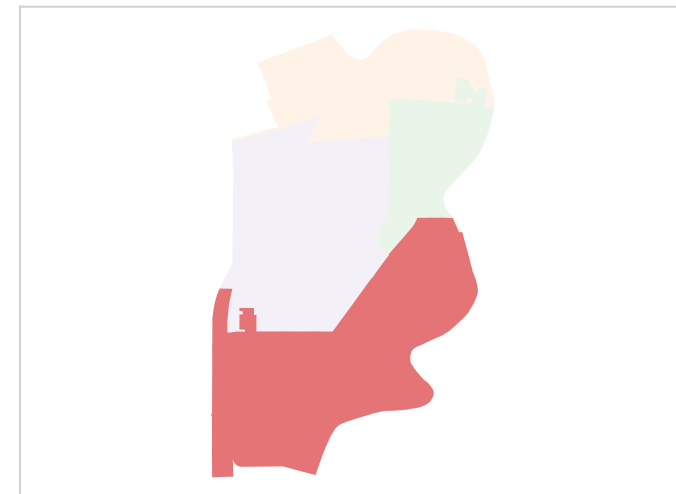
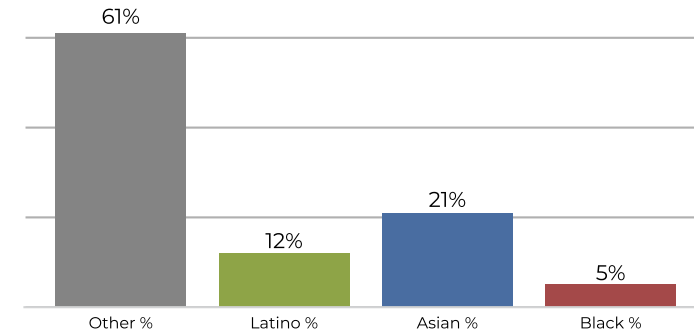
District C



2020 Census

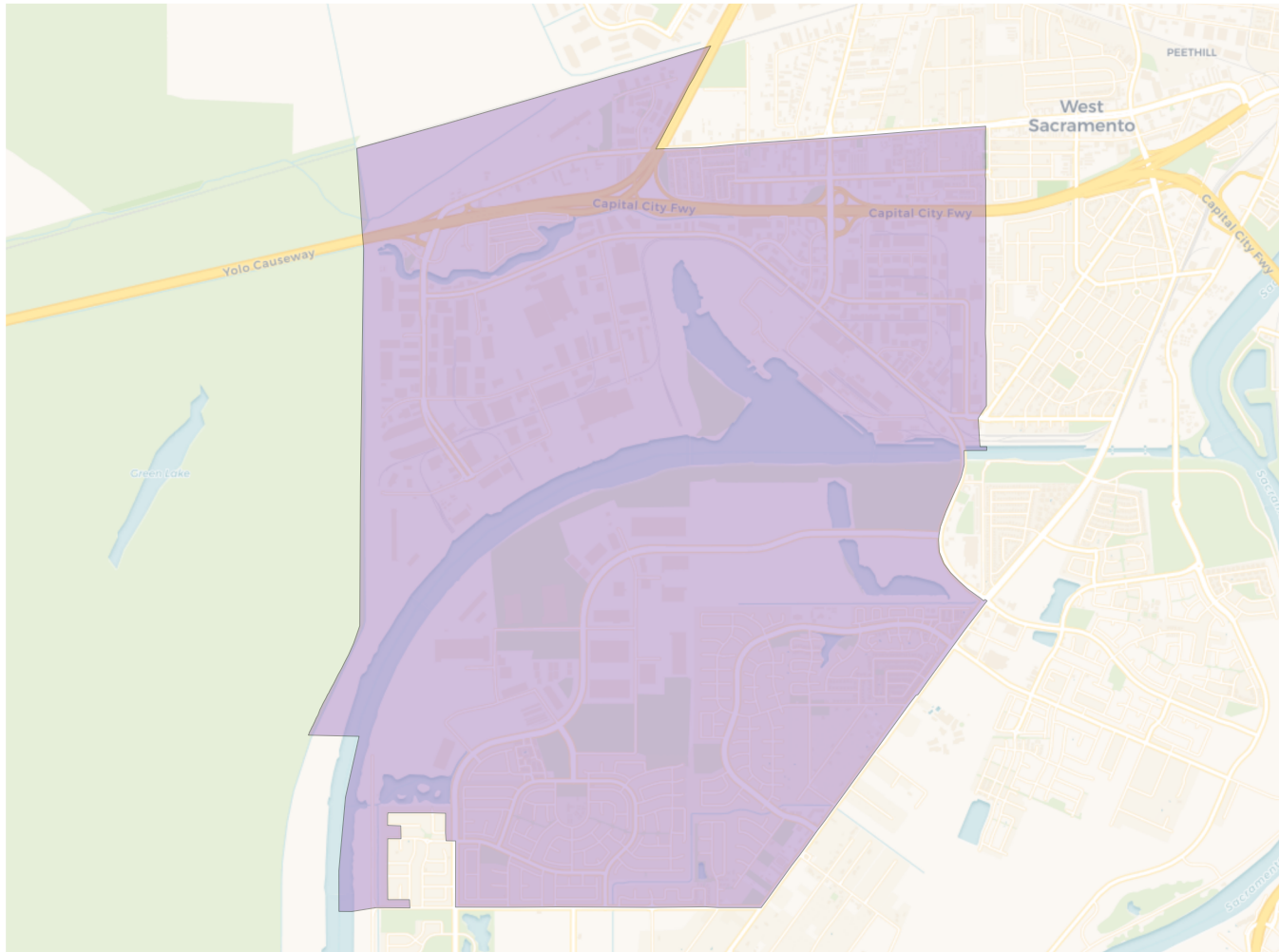


Citizen Voting Age Population

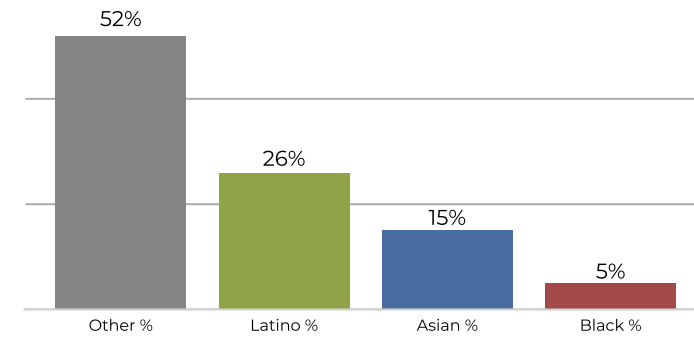


Population	Deviation	Deviation %	Other	Other %	Latino	Latino %	Asian	Asian %	Black	Black %
13,512	-7	-0.1%	7,226	53.5%	2,845	21.1%	2,824	20.9%	617	4.6%
Total CVAP	Other CVAP	Other CVAP %	Latino CVAP	Latino CVAP %	Asian CVAP	Asian CVAP %	Black CVAP	Black CVAP %		
8,742	5,387	61.6%	1,051	12.0%	1,834	21.0%	470	5.4%		

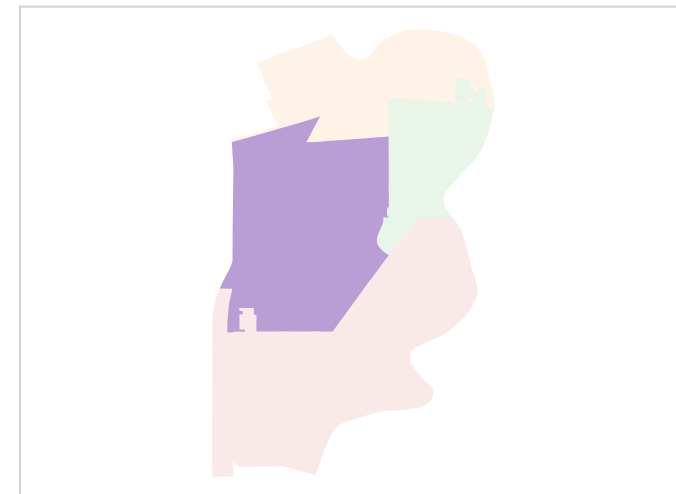
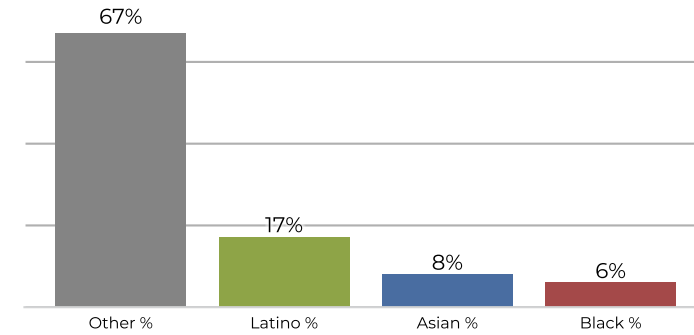
District D



2020 Census



Citizen Voting Age Population



Population	Deviation	Deviation %	Other	Other %	Latino	Latino %	Asian	Asian %	Black	Black %
13,878	359	2.7%	7,330	52.8%	3,632	26.2%	2,117	15.3%	799	5.8%
Total CVAP	Other CVAP	Other CVAP %	Latino CVAP	Latino CVAP %	Asian CVAP	Asian CVAP %	Black CVAP	Black CVAP %		
8,531	5,767	67.6%	1,511	17.7%	696	8.2%	557	6.5%		