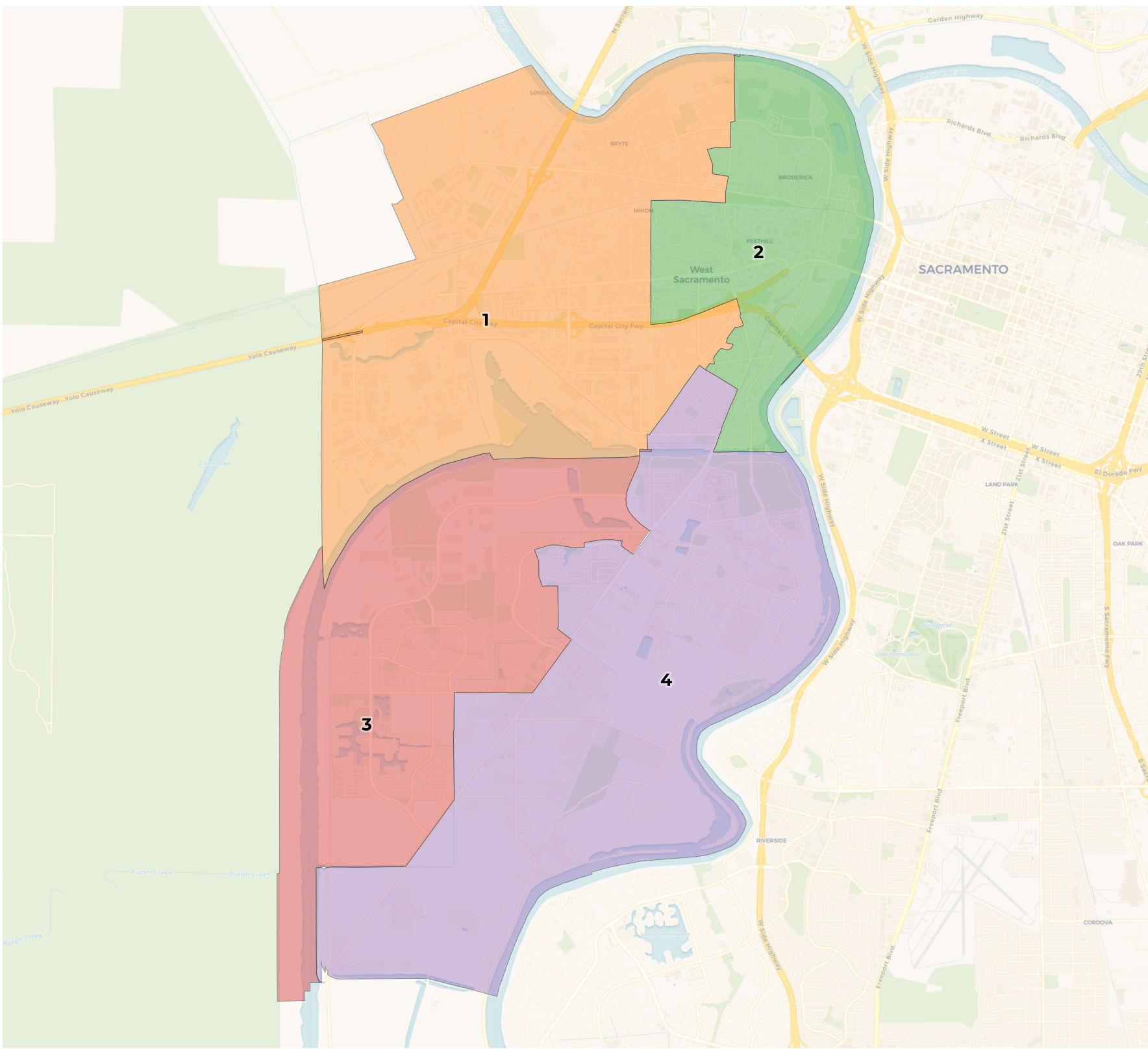


**REDISTRICTING
PARTNERS**

City of West Sacramento
DistrictR ID 123107



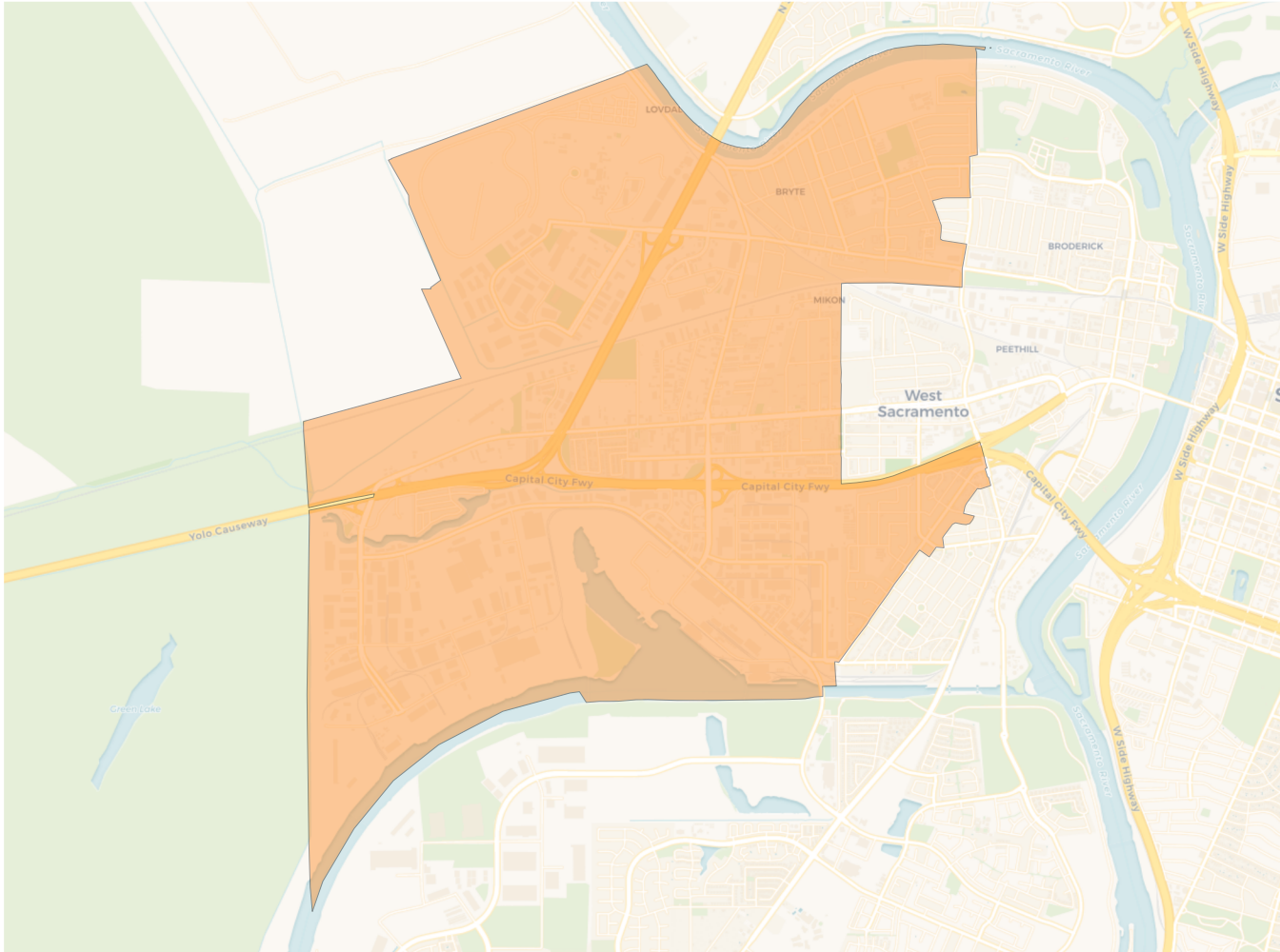
2020 Census

	1	2	3	4
Population	14,242	13,586	13,137	13,112
Deviation	723	67	-382	-407
Deviation %	5.3%	0.5%	-2.8%	-3.0%
Other	6,671	5,913	7,055	7,447
Other %	46.8%	43.5%	53.7%	56.8%
Latino	5,863	5,578	2,924	2,959
Latino %	41.2%	41.1%	22.3%	22.6%
Asian	1,162	1,323	2,407	2,252
Asian %	8.2%	9.7%	18.3%	17.2%
Black	546	772	751	454
Black %	3.8%	5.7%	5.7%	3.5%

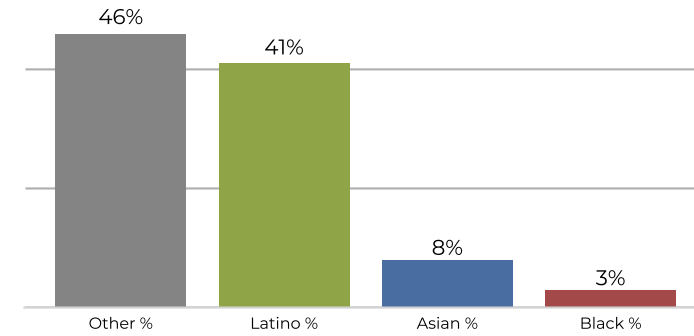
Citizen Voting Age Population (CVAP)

	1	2	3	4
Total CVAP	8,356	7,656	8,683	8,849
Other CVAP	4,835	4,310	5,514	5,990
Other CVAP %	57.9%	56.3%	63.5%	67.7%
Latino CVAP	2,278	2,181	1,414	1,272
Latino CVAP %	27.3%	28.5%	16.3%	14.4%
Asian CVAP	608	573	1,136	1,363
Asian CVAP %	7.3%	7.5%	13.1%	15.4%
Black CVAP	635	592	619	224
Black CVAP %	7.6%	7.7%	7.1%	2.5%

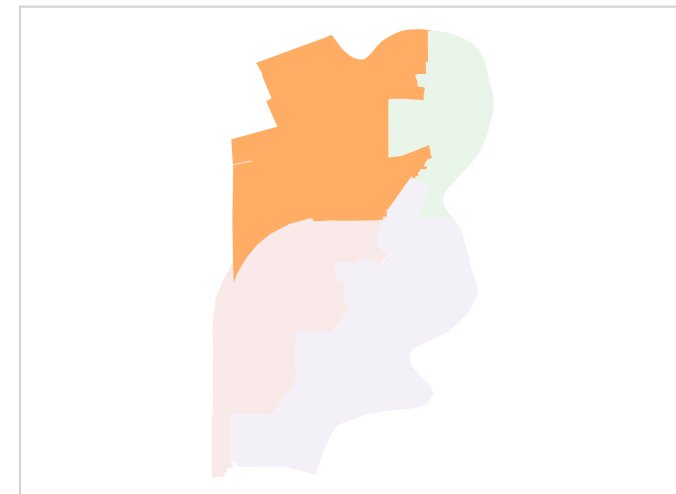
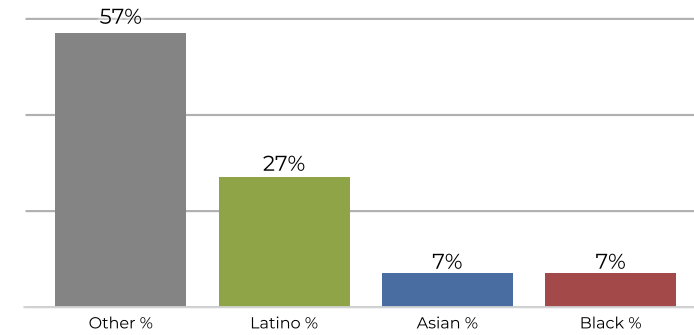
District 1



2020 Census

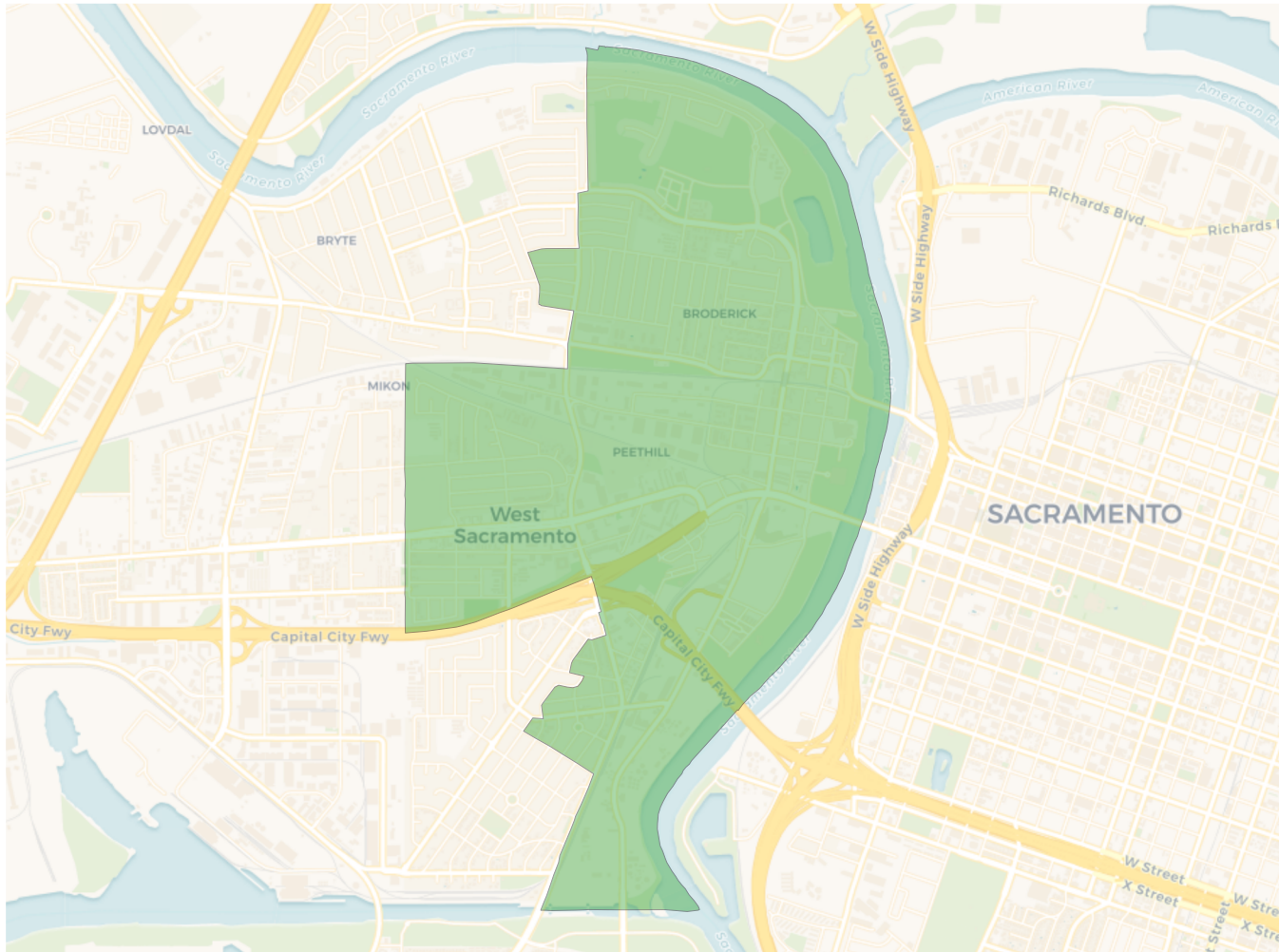


Citizen Voting Age Population

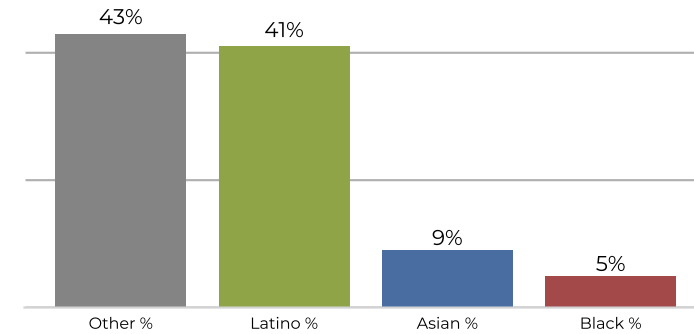


Population	Deviation	Deviation %	Other	Other %	Latino	Latino %	Asian	Asian %	Black	Black %
14,242	723	5.3%	6,671	46.8%	5,863	41.2%	1,162	8.2%	546	3.8%
Total CVAP	Other CVAP	Other CVAP %	Latino CVAP	Latino CVAP %	Asian CVAP	Asian CVAP %	Black CVAP	Black CVAP %		
8,356	4,835	57.9%	2,278	27.3%	608	7.3%	635	7.6%		

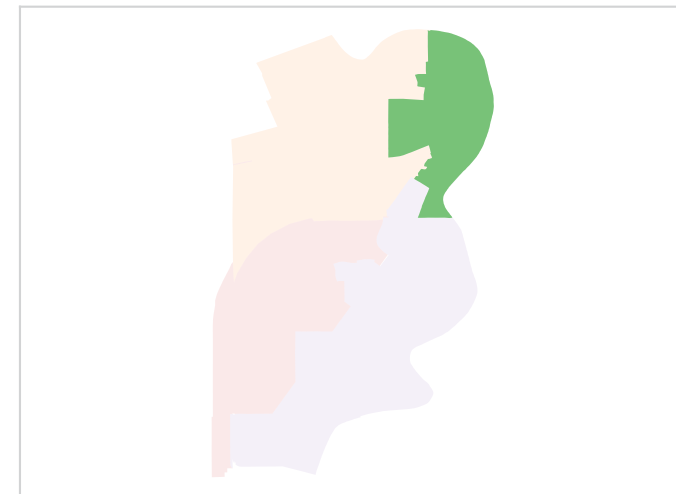
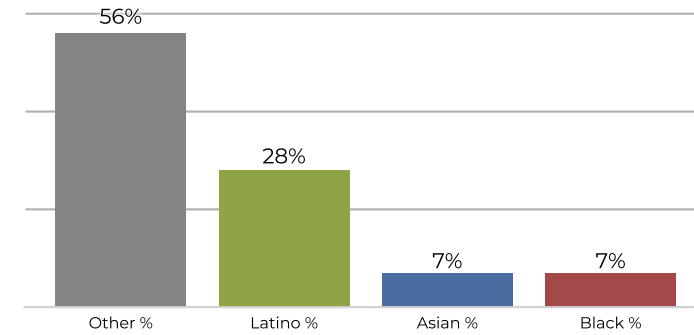
District 2



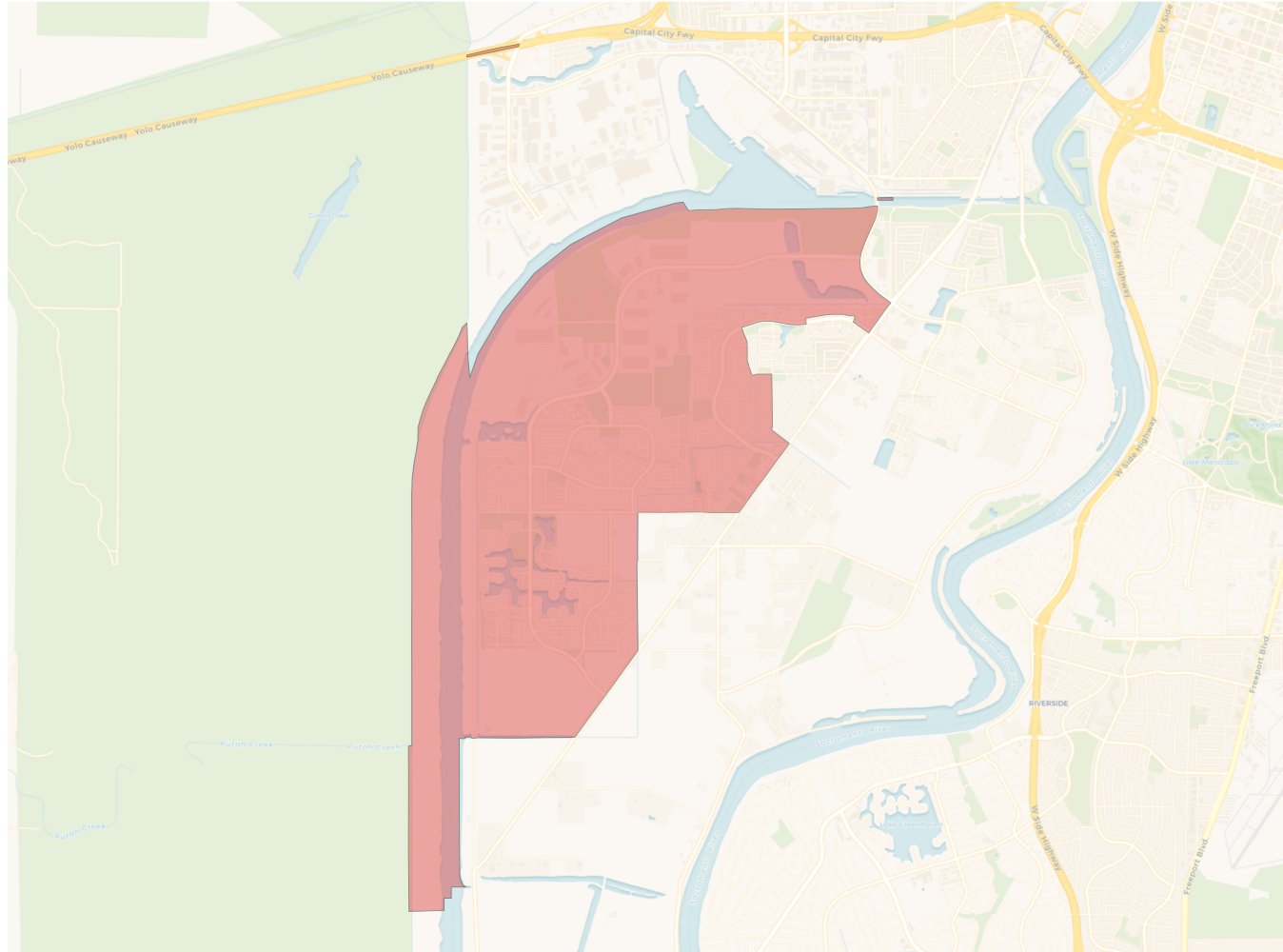
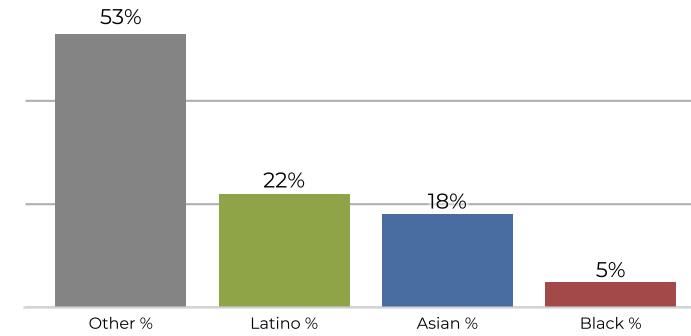
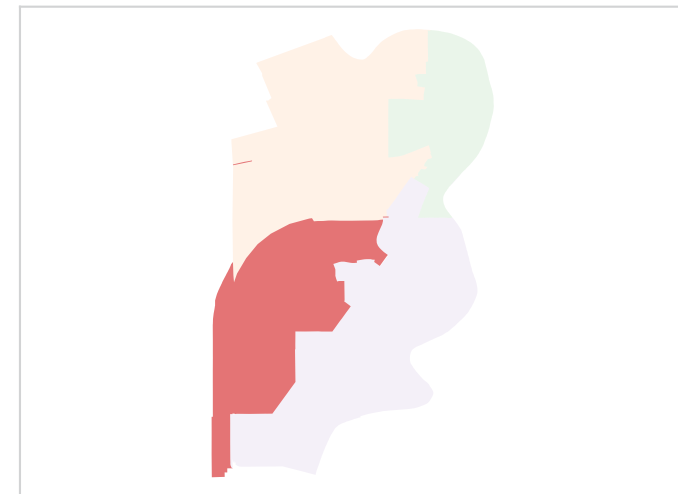
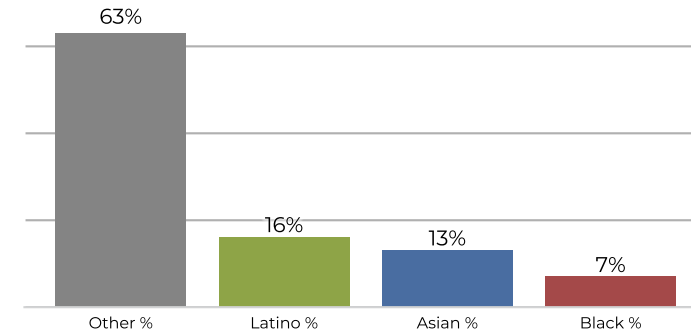
2020 Census



Citizen Voting Age Population

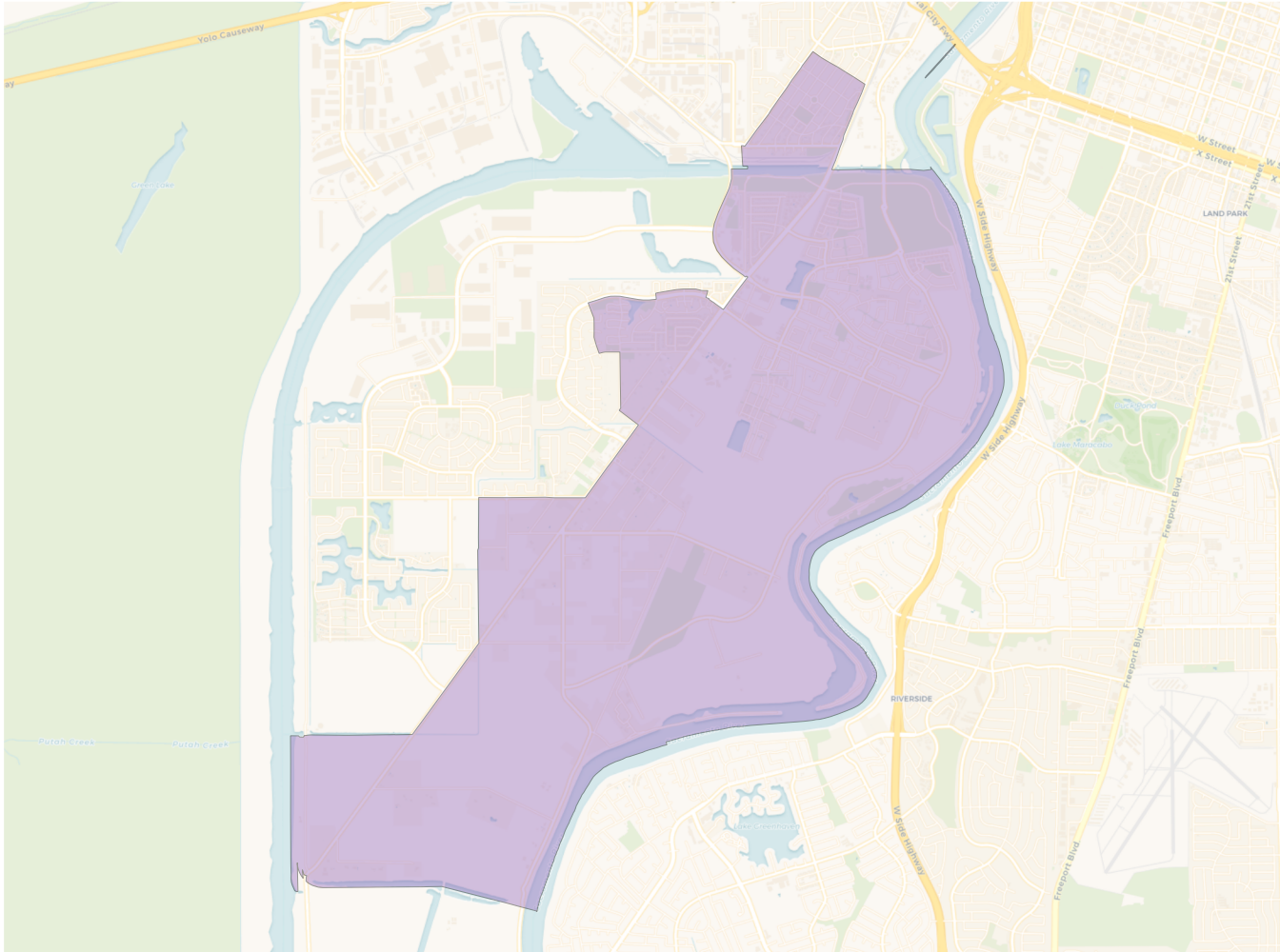


Population	Deviation	Deviation %	Other	Other %	Latino	Latino %	Asian	Asian %	Black	Black %
13,586	67	0.5%	5,913	43.5%	5,578	41.1%	1,323	9.7%	772	5.7%
Total CVAP	Other CVAP	Other CVAP %	Latino CVAP	Latino CVAP %	Asian CVAP	Asian CVAP %	Black CVAP	Black CVAP %		
7,656	4,310	56.3%	2,181	28.5%	573	7.5%	592	7.7%		

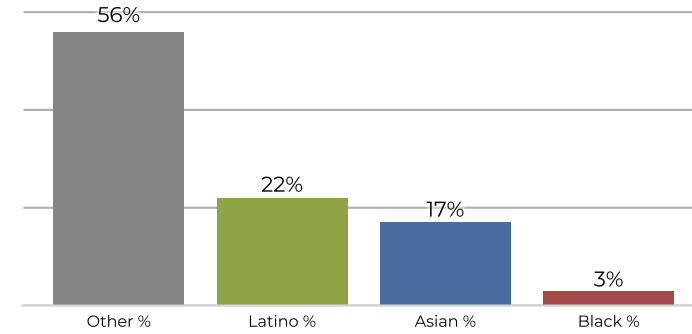
District 3

2020 Census

Citizen Voting Age Population


Population	Deviation	Deviation %	Other	Other %	Latino	Latino %	Asian	Asian %	Black	Black %
13,137	-382	-2.8%	7,055	53.7%	2,924	22.3%	2,407	18.3%	751	5.7%
Total CVAP	Other CVAP	Other CVAP %	Latino CVAP	Latino CVAP %	Asian CVAP	Asian CVAP %	Black CVAP	Black CVAP %		
8,683	5,514	63.5%	1,414	16.3%	1,136	13.1%	619	7.1%		

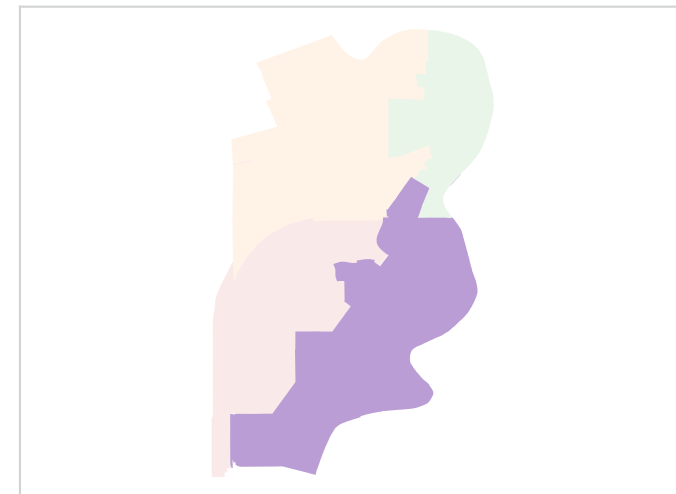
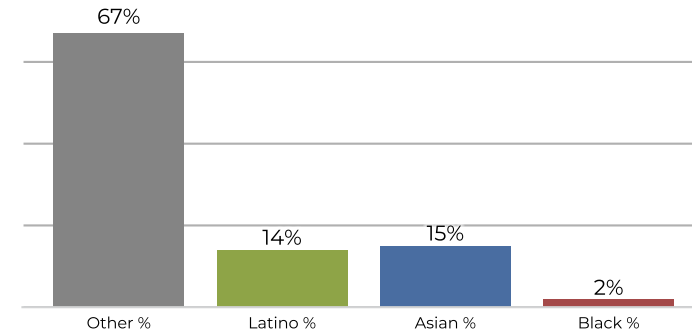
District 4



2020 Census



Citizen Voting Age Population



Population	Deviation	Deviation %	Other	Other %	Latino	Latino %	Asian	Asian %	Black	Black %
13,112	-407	-3.0%	7,447	56.8%	2,959	22.6%	2,252	17.2%	454	3.5%
Total CVAP	Other CVAP	Other CVAP %	Latino CVAP	Latino CVAP %	Asian CVAP	Asian CVAP %	Black CVAP	Black CVAP %		
8,849	5,990	67.7%	1,272	14.4%	1,363	15.4%	224	2.5%		