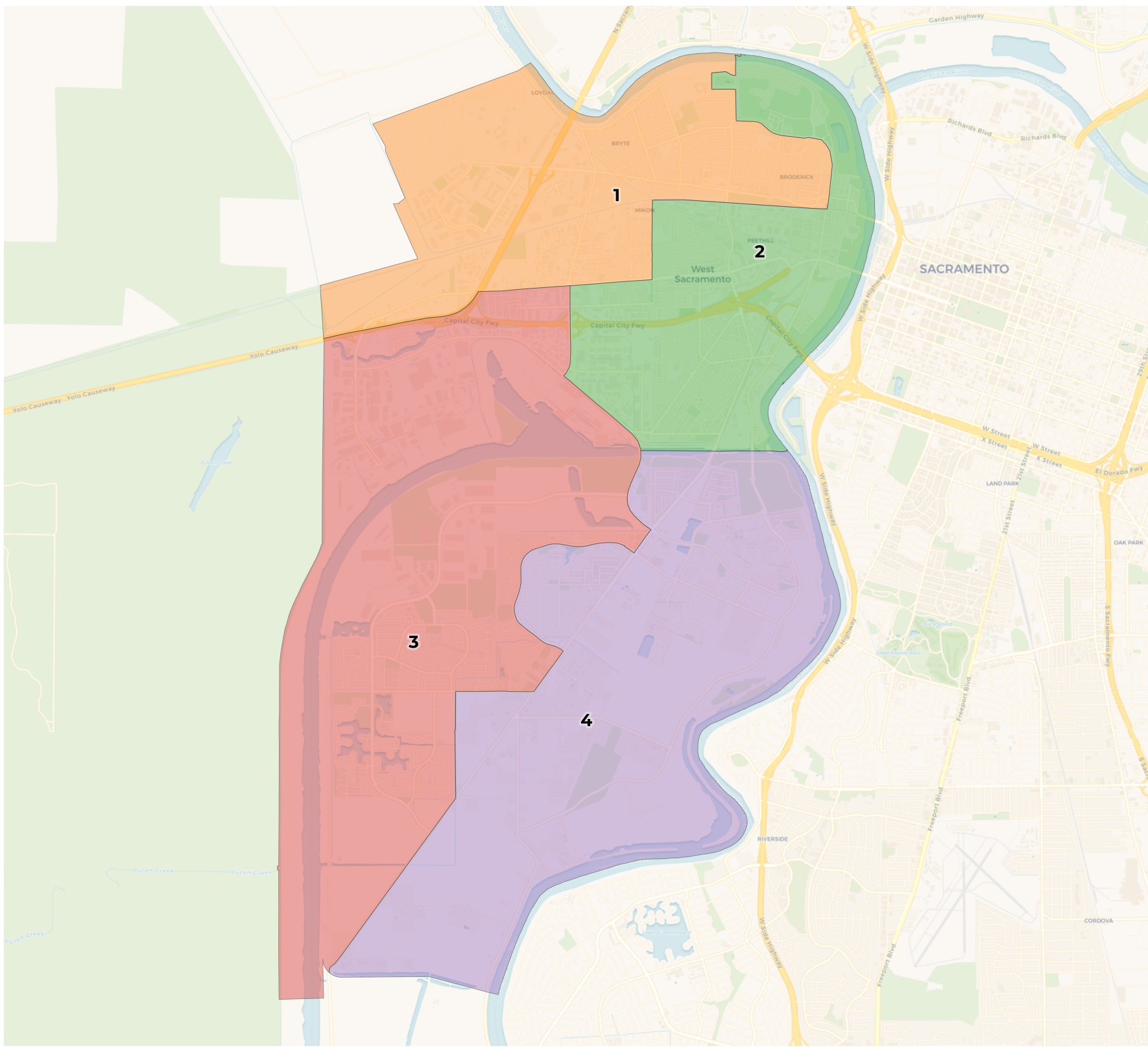


**REDISTRICTING
PARTNERS**

City of West Sacramento
DistrictR ID 123820



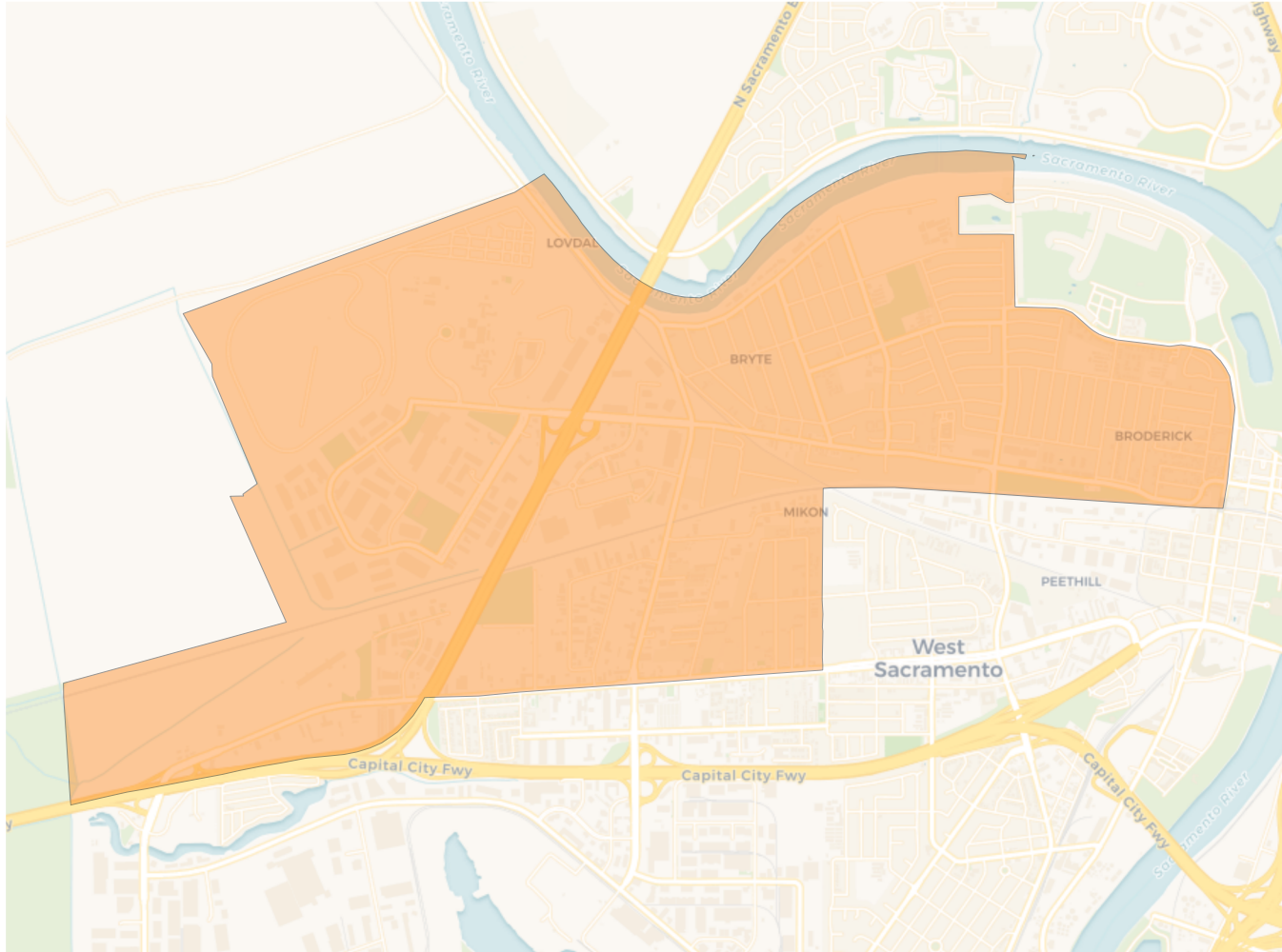
2020 Census

	1	2	3	4
Population	13,535	13,888	14,310	12,344
Deviation	16	369	791	-1,175
Deviation %	0.1%	2.7%	5.9%	-8.7%
Other	5,706	7,029	7,345	7,006
Other %	42.2%	50.6%	51.3%	56.8%
Latino	6,392	4,679	3,515	2,738
Latino %	47.2%	33.7%	24.6%	22.2%
Asian	961	1,457	2,535	2,191
Asian %	7.1%	10.5%	17.7%	17.7%
Black	476	723	915	409
Black %	3.5%	5.2%	6.4%	3.3%

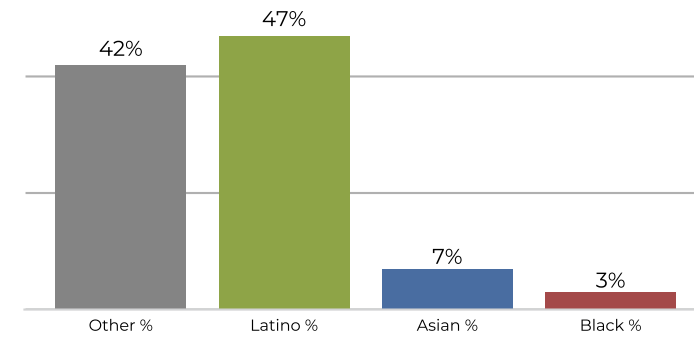
Citizen Voting Age Population (CVAP)

	1	2	3	4
Total CVAP	7,819	8,600	9,019	8,106
Other CVAP	4,117	5,339	5,569	5,624
Other CVAP %	52.7%	62.1%	61.7%	69.4%
Latino CVAP	2,461	2,135	1,605	944
Latino CVAP %	31.5%	24.8%	17.8%	11.6%
Asian CVAP	663	490	1,196	1,331
Asian CVAP %	8.5%	5.7%	13.3%	16.4%
Black CVAP	578	636	649	207
Black CVAP %	7.4%	7.4%	7.2%	2.6%

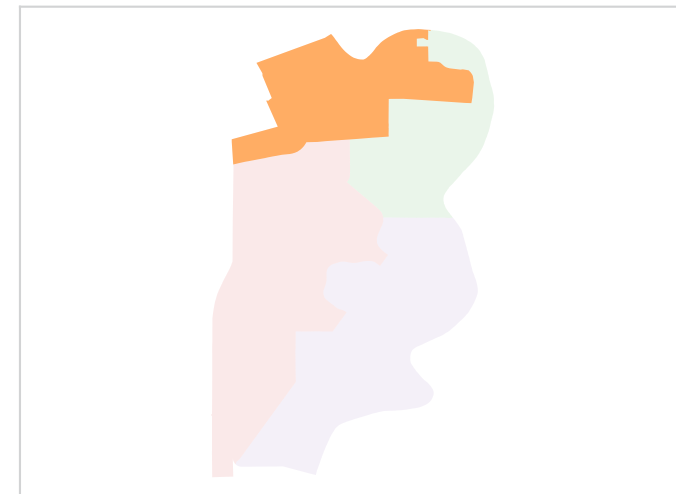
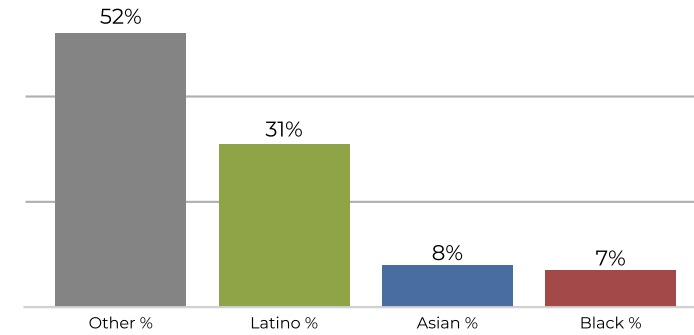
District 1



2020 Census

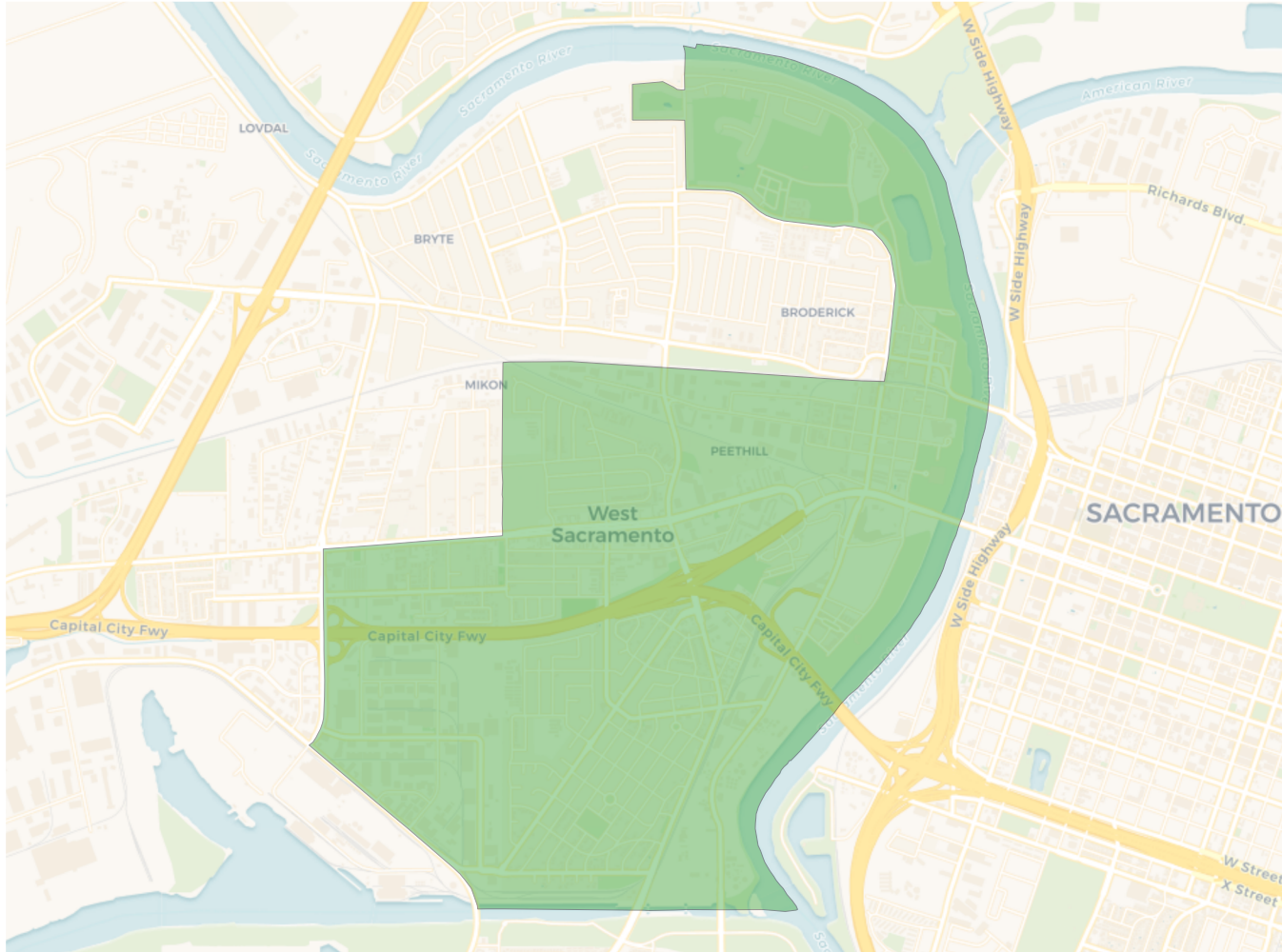


Citizen Voting Age Population

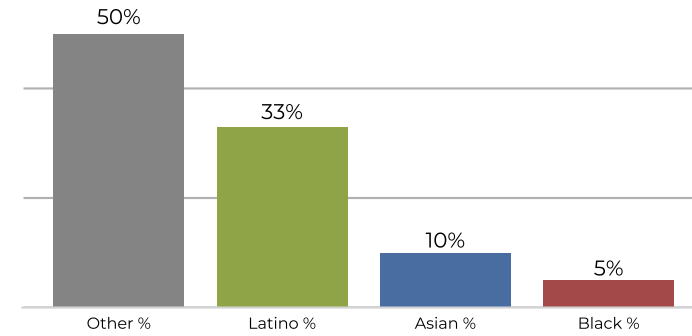


Population	Deviation	Deviation %	Other	Other %	Latino	Latino %	Asian	Asian %	Black	Black %
13,535	16	0.1%	5,706	42.2%	6,392	47.2%	961	7.1%	476	3.5%
Total CVAP	Other CVAP	Other CVAP %	Latino CVAP	Latino CVAP %	Asian CVAP	Asian CVAP %	Black CVAP	Black CVAP %		
7,819	4,117	52.7%	2,461	31.5%	663	8.5%	578	7.4%		

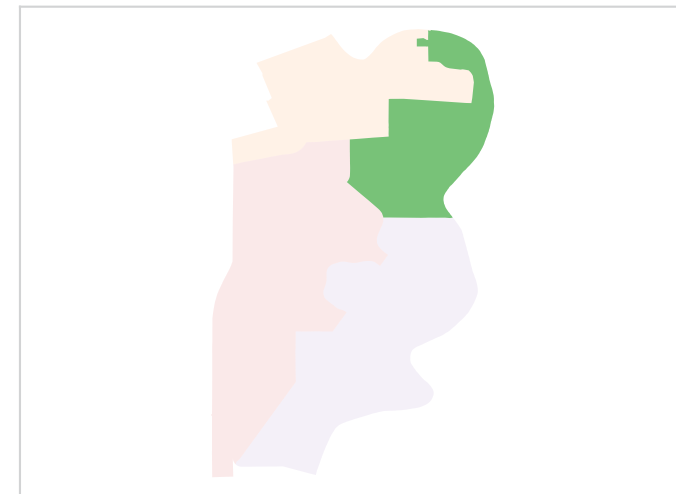
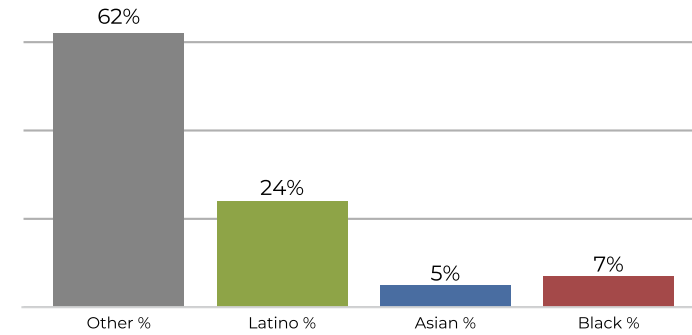
District 2



2020 Census

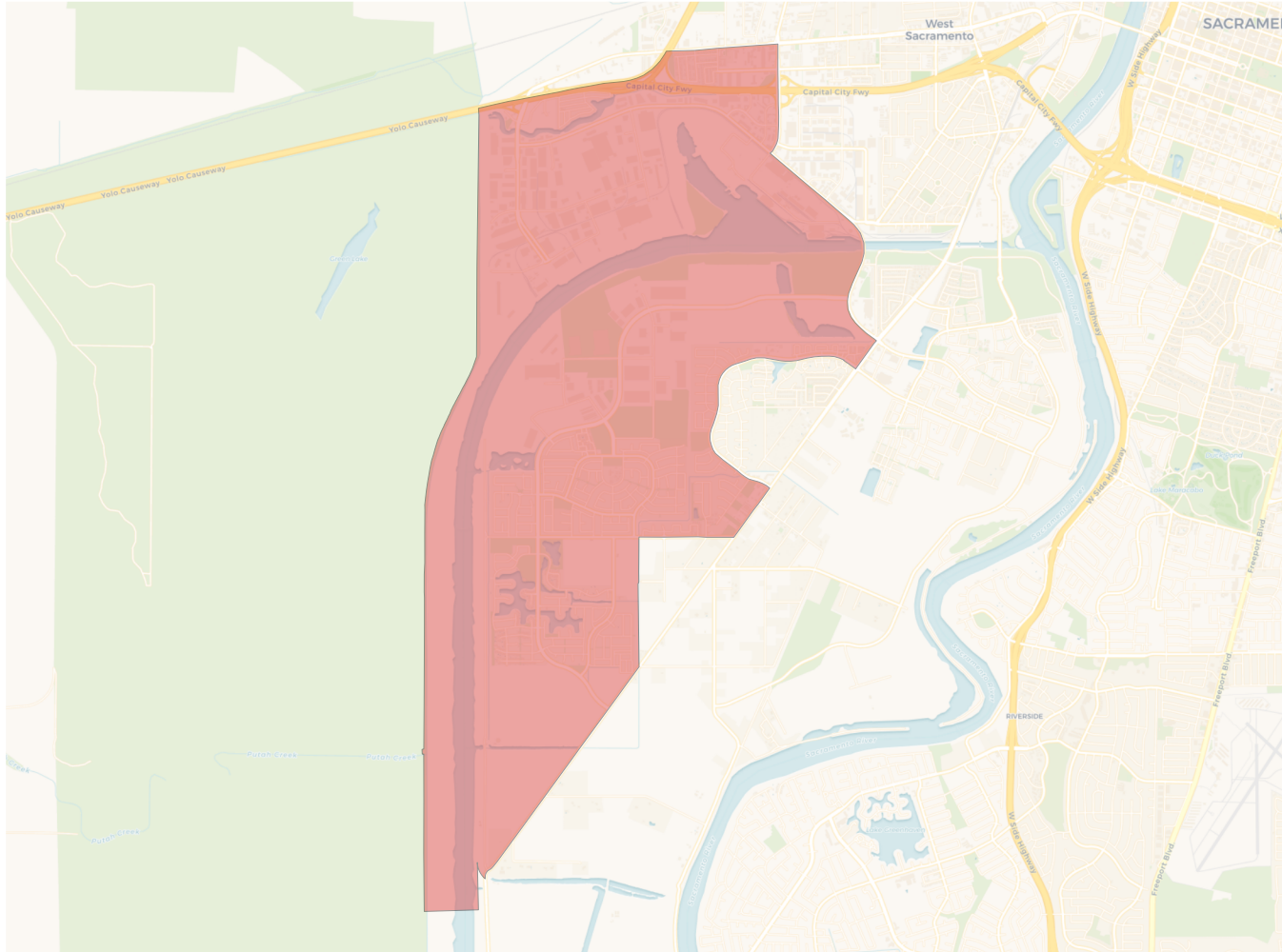


Citizen Voting Age Population

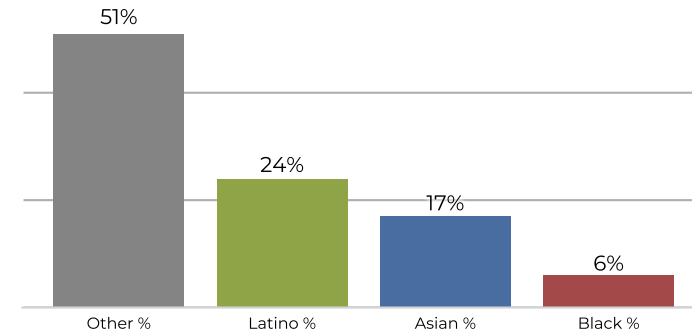


Population	Deviation	Deviation %	Other	Other %	Latino	Latino %	Asian	Asian %	Black	Black %
13,888	369	2.7%	7,029	50.6%	4,679	33.7%	1,457	10.5%	723	5.2%
Total CVAP	Other CVAP	Other CVAP %	Latino CVAP	Latino CVAP %	Asian CVAP	Asian CVAP %	Black CVAP	Black CVAP %		
8,600	5,339	62.1%	2,135	24.8%	490	5.7%	636	7.4%		

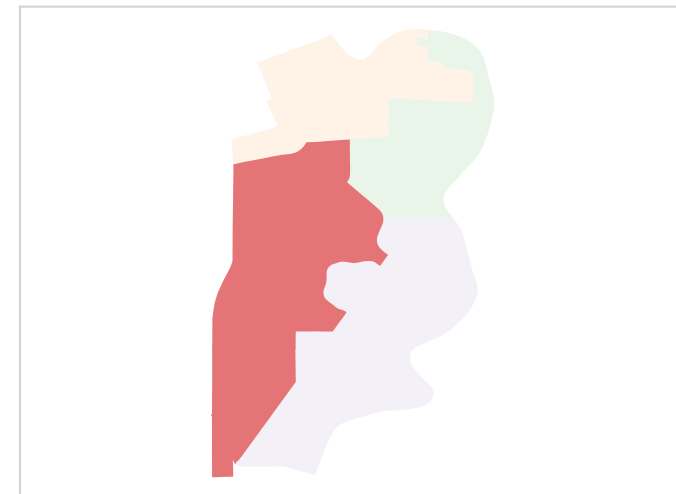
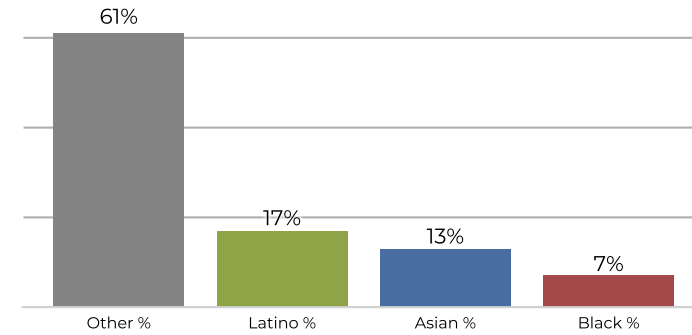
District 3



2020 Census

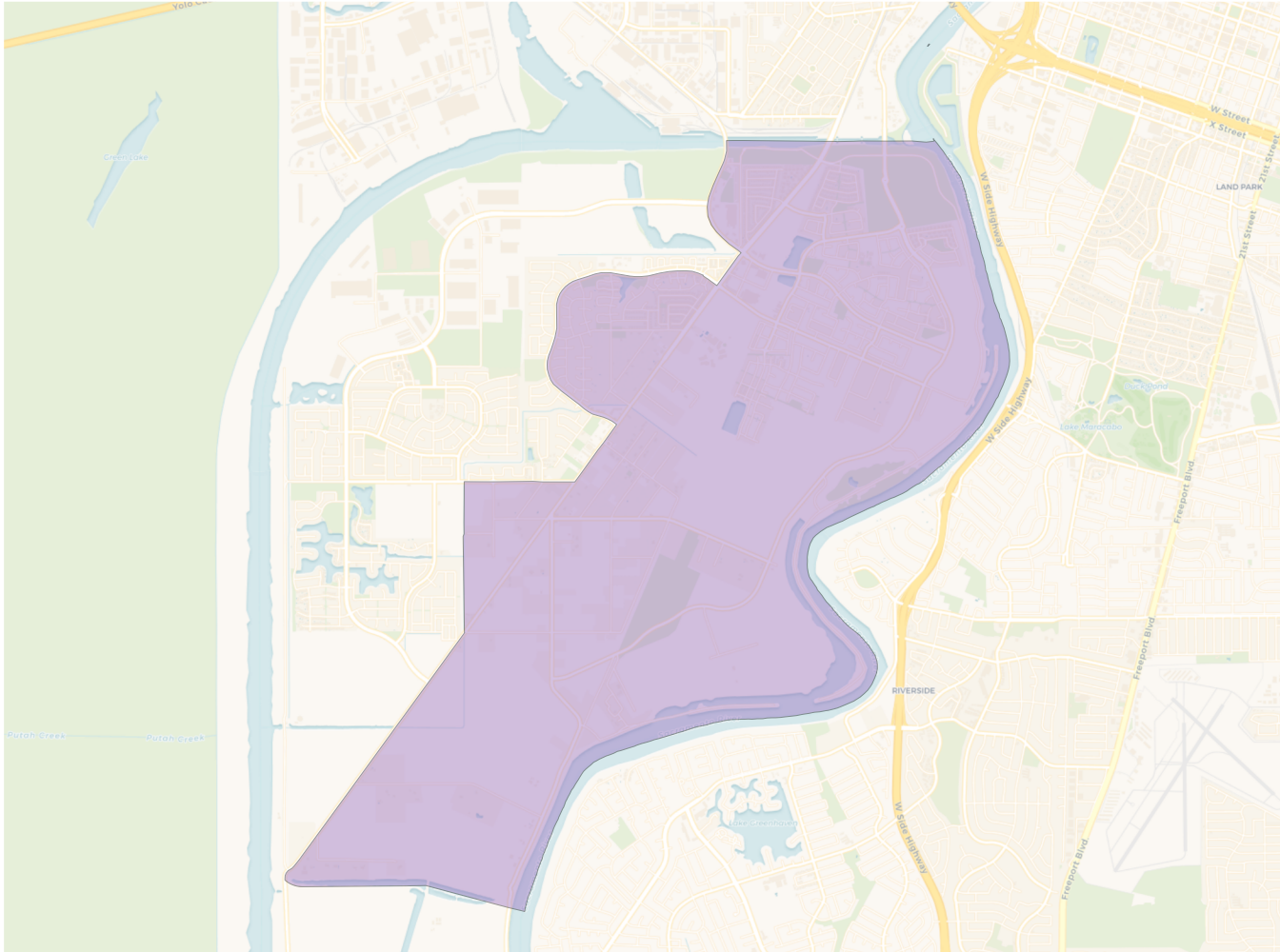


Citizen Voting Age Population

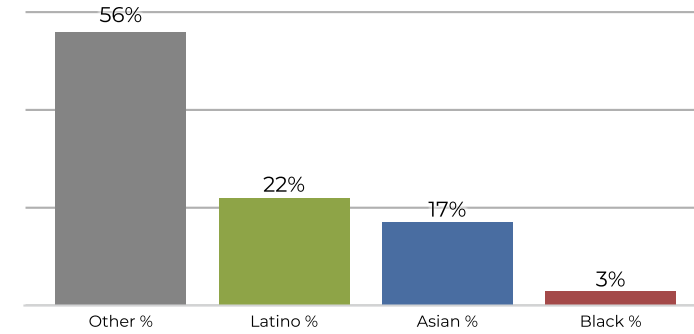


Population	Deviation	Deviation %	Other	Other %	Latino	Latino %	Asian	Asian %	Black	Black %
14,310	791	5.9%	7,345	51.3%	3,515	24.6%	2,535	17.7%	915	6.4%
Total CVAP	Other CVAP	Other CVAP %	Latino CVAP	Latino CVAP %	Asian CVAP	Asian CVAP %	Black CVAP	Black CVAP %		
9,019	5,569	61.7%	1,605	17.8%	1,196	13.3%	649	7.2%		

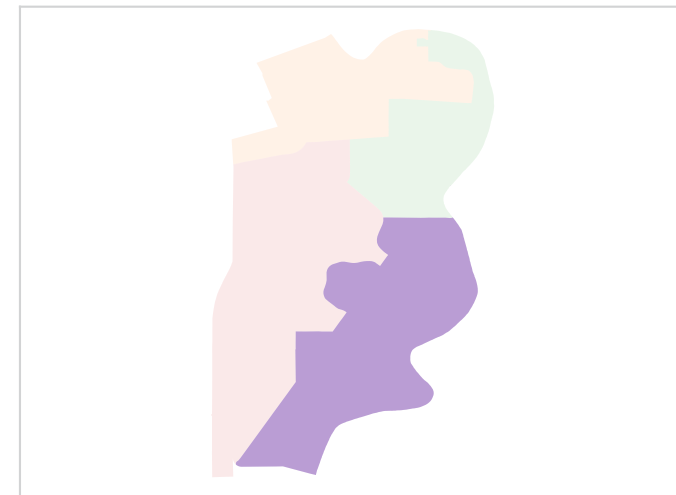
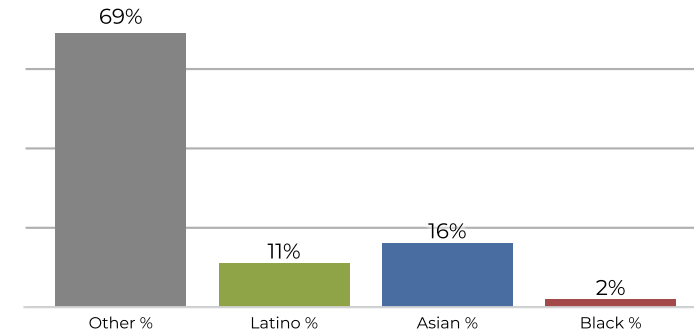
District 4



2020 Census



Citizen Voting Age Population



Population	Deviation	Deviation %	Other	Other %	Latino	Latino %	Asian	Asian %	Black	Black %
12,344	-1,175	-8.7%	7,006	56.8%	2,738	22.2%	2,191	17.7%	409	3.3%
Total CVAP	Other CVAP	Other CVAP %	Latino CVAP	Latino CVAP %	Asian CVAP	Asian CVAP %	Black CVAP	Black CVAP %		
8,106	5,624	69.4%	944	11.6%	1,331	16.4%	207	2.6%		