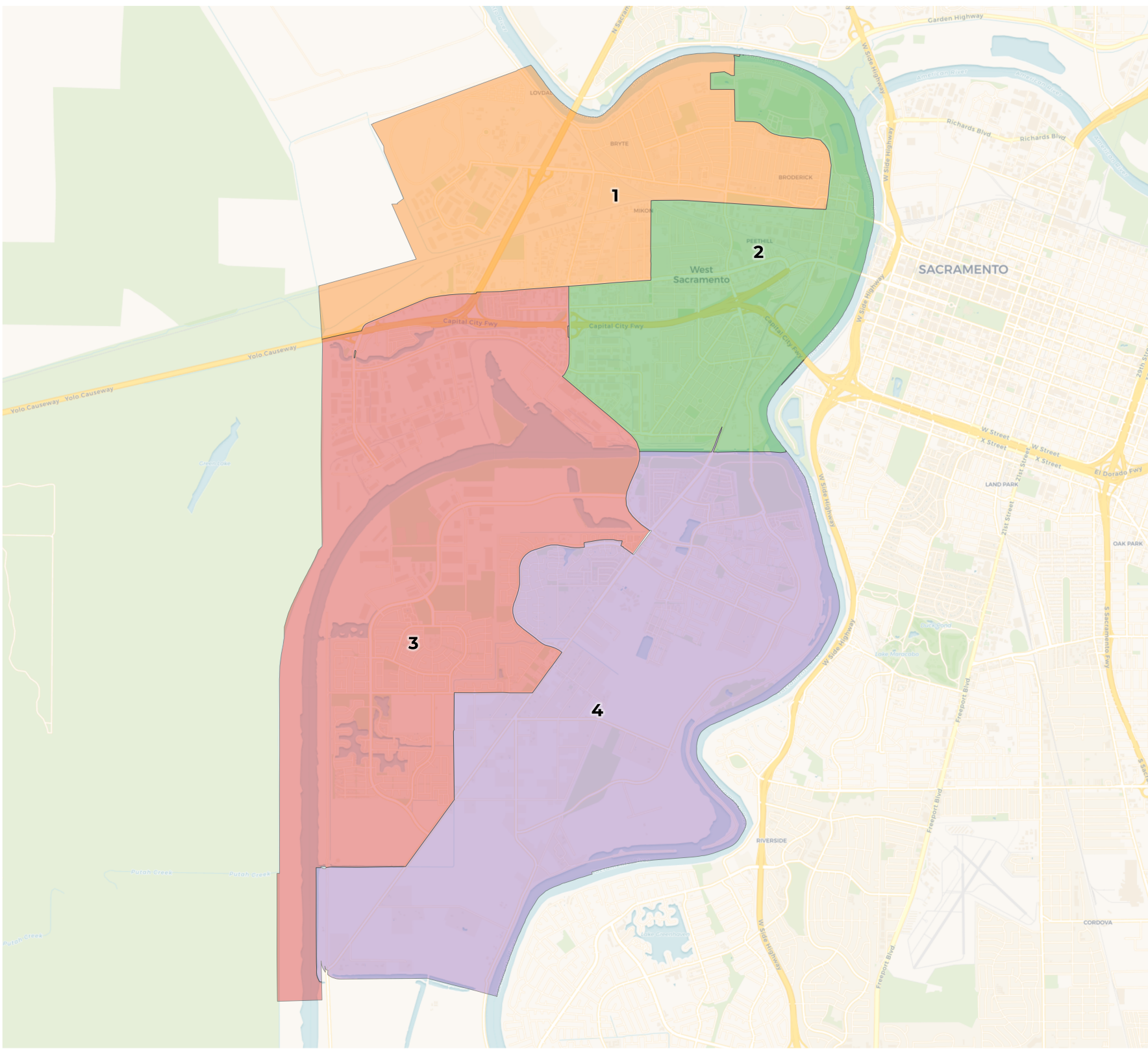


REDISTRICTING PARTNERS

City of West Sacramento

Merge 2 & 3 ID: 124343



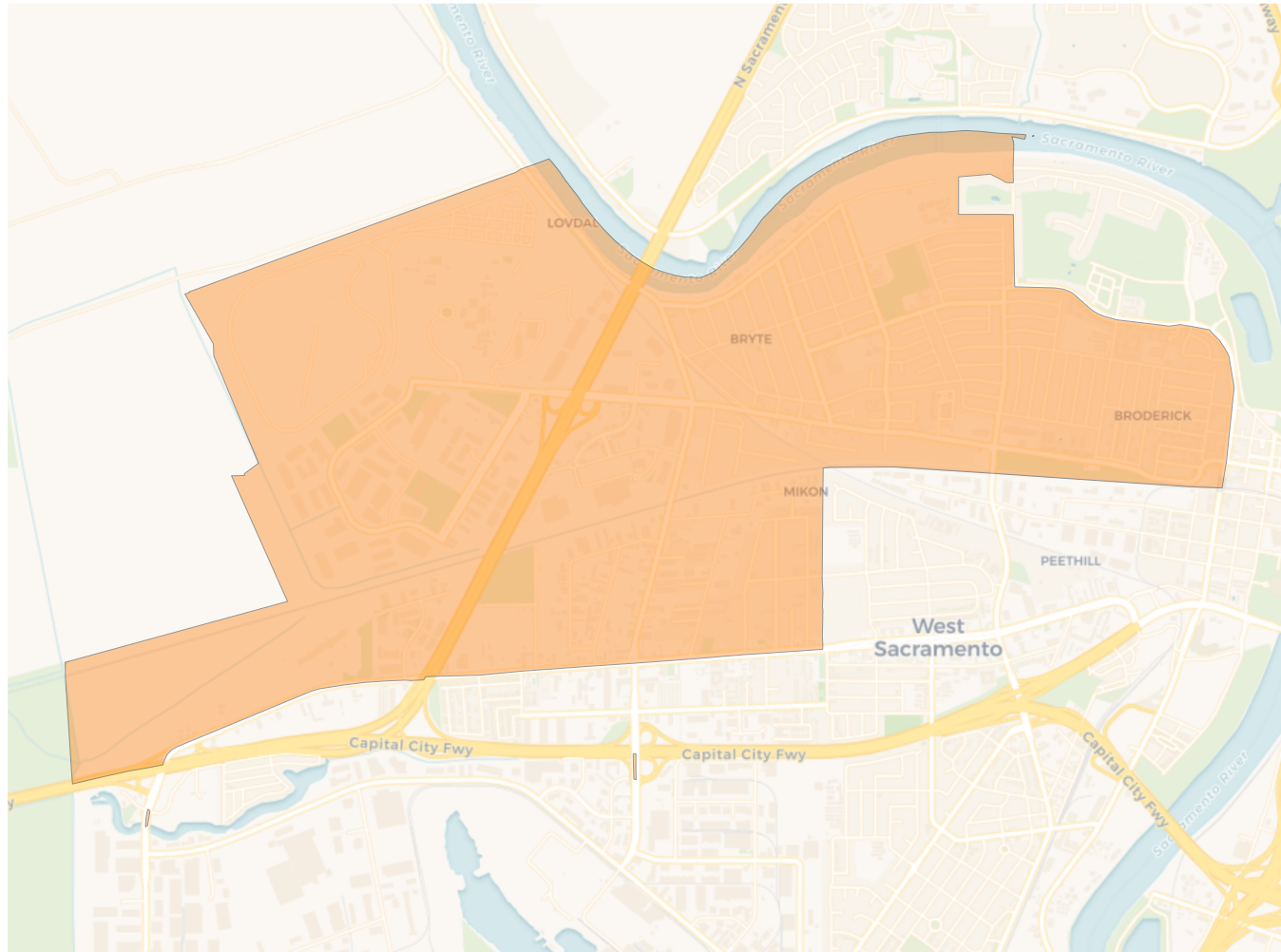
2020 Census

	1	2	3	4
Population	13,484	13,888	14,177	12,528
Deviation	-35	369	658	-991
Deviation %	-0.3%	2.7%	4.9%	-7.3%
Other	5,687	7,029	7,302	7,068
Other %	42.2%	50.6%	51.5%	56.4%
Latino	6,377	4,679	3,480	2,788
Latino %	47.3%	33.7%	24.5%	22.3%
Asian	961	1,457	2,492	2,234
Asian %	7.1%	10.5%	17.6%	17.8%
Black	459	723	903	438
Black %	3.4%	5.2%	6.4%	3.5%

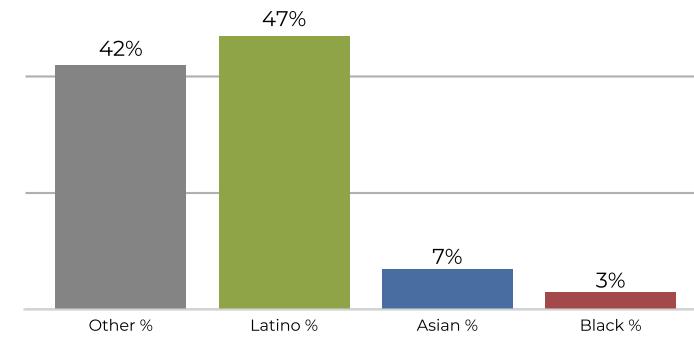
Citizen Voting Age Population (CVAP)

	1	2	3	4
Total CVAP	7,794	8,600	8,908	8,242
Other CVAP	4,098	5,339	5,520	5,692
Other CVAP %	52.6%	62.1%	62.0%	69.1%
Latino CVAP	2,456	2,135	1,576	978
Latino CVAP %	31.5%	24.8%	17.7%	11.9%
Asian CVAP	663	490	1,179	1,348
Asian CVAP %	8.5%	5.7%	13.2%	16.4%
Black CVAP	577	636	633	224
Black CVAP %	7.4%	7.4%	7.1%	2.7%

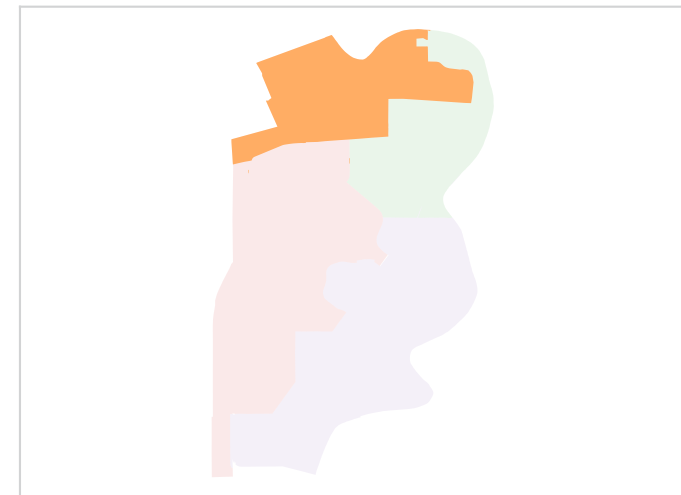
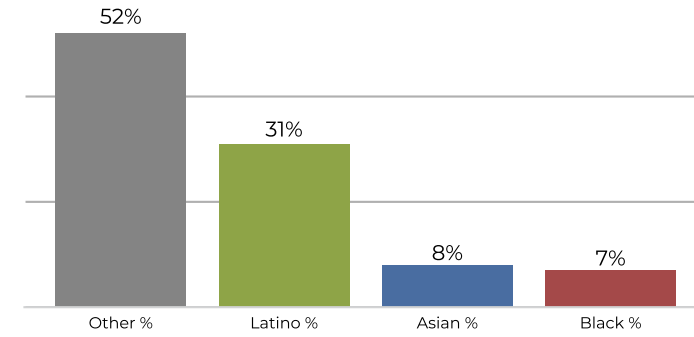
District 1



2020 Census

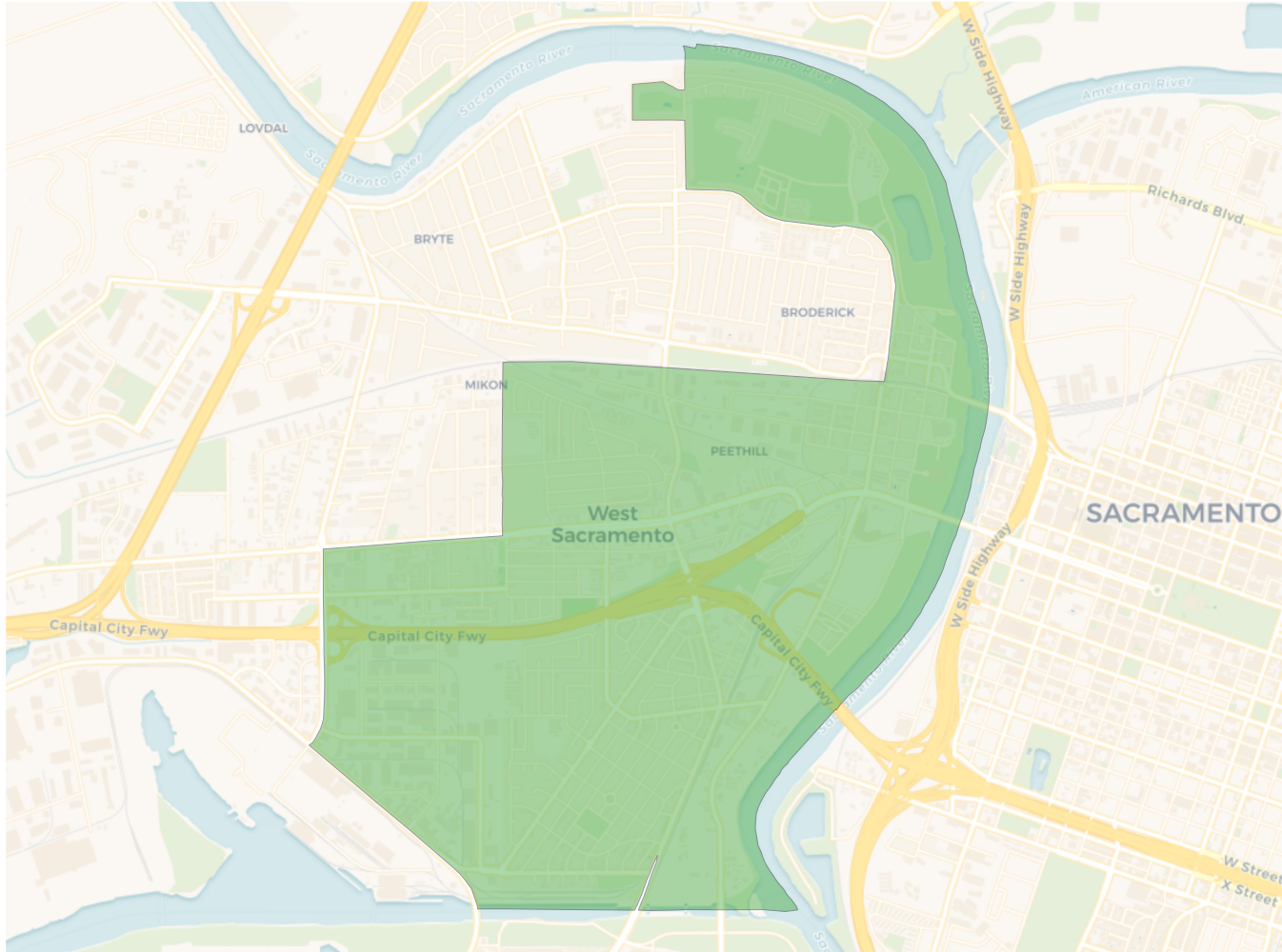


Citizen Voting Age Population

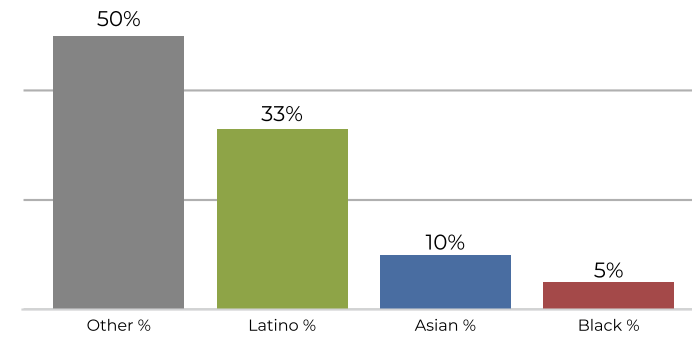


Population	Deviation	Deviation %	Other	Other %	Latino	Latino %	Asian	Asian %	Black	Black %
13,484	-35	-0.3%	5,687	42.2%	6,377	47.3%	961	7.1%	459	3.4%
Total CVAP	Other CVAP	Other CVAP %	Latino CVAP	Latino CVAP %	Asian CVAP	Asian CVAP %	Black CVAP	Black CVAP %		
7,794	4,098	52.6%	2,456	31.5%	663	8.5%	577	7.4%		

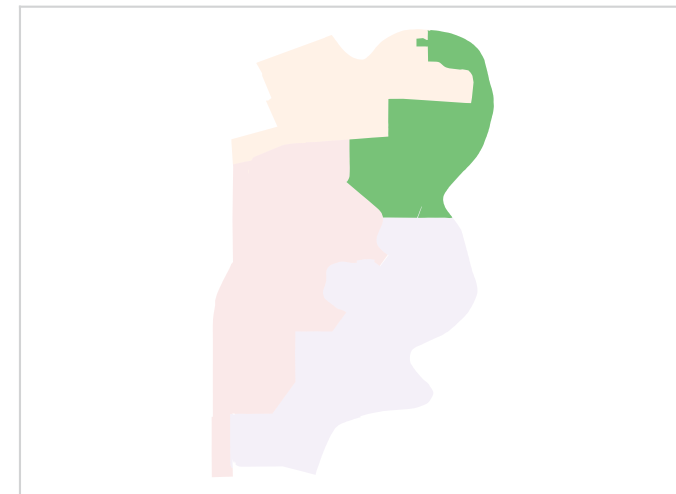
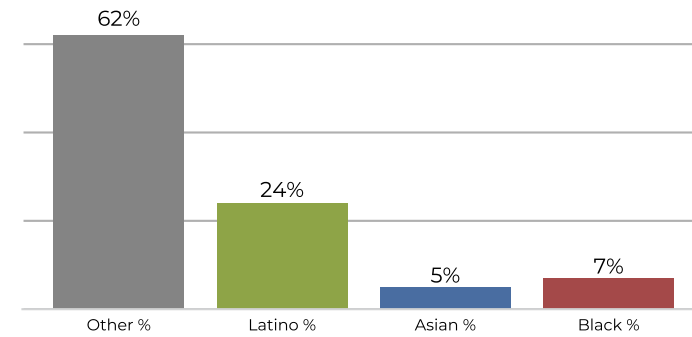
District 2



2020 Census

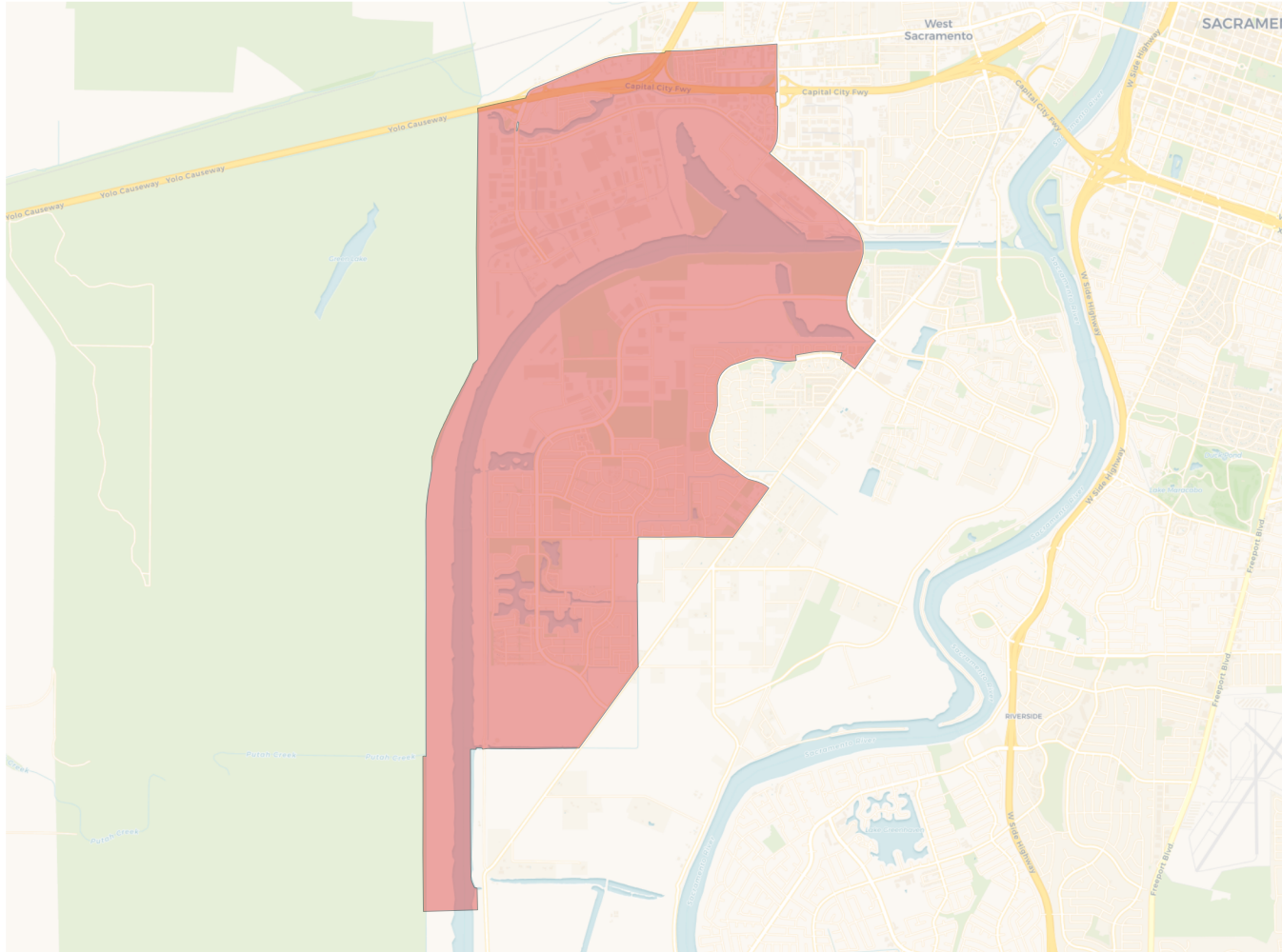


Citizen Voting Age Population

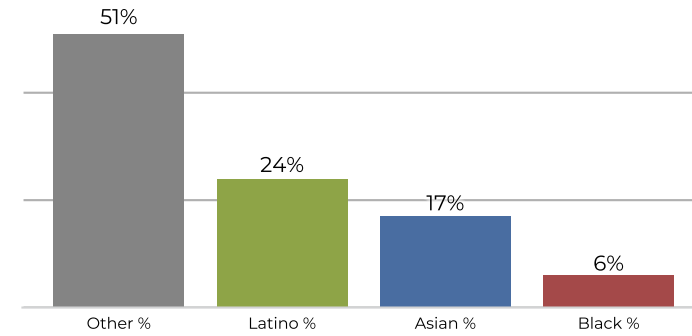


Population	Deviation	Deviation %	Other	Other %	Latino	Latino %	Asian	Asian %	Black	Black %
13,888	369	2.7%	7,029	50.6%	4,679	33.7%	1,457	10.5%	723	5.2%
Total CVAP	Other CVAP	Other CVAP %	Latino CVAP	Latino CVAP %	Asian CVAP	Asian CVAP %	Black CVAP	Black CVAP %		
8,600	5,339	62.1%	2,135	24.8%	490	5.7%	636	7.4%		

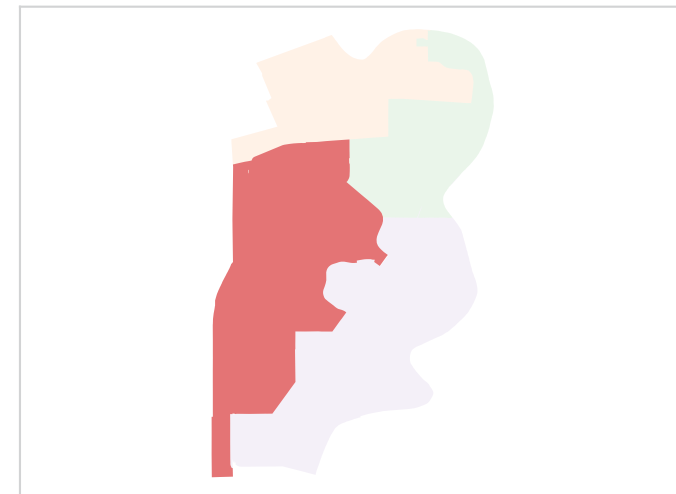
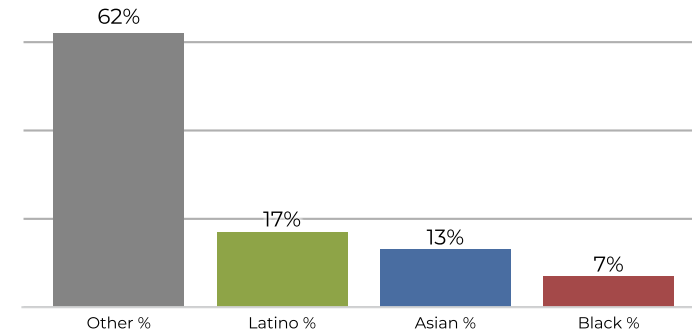
District 3



2020 Census

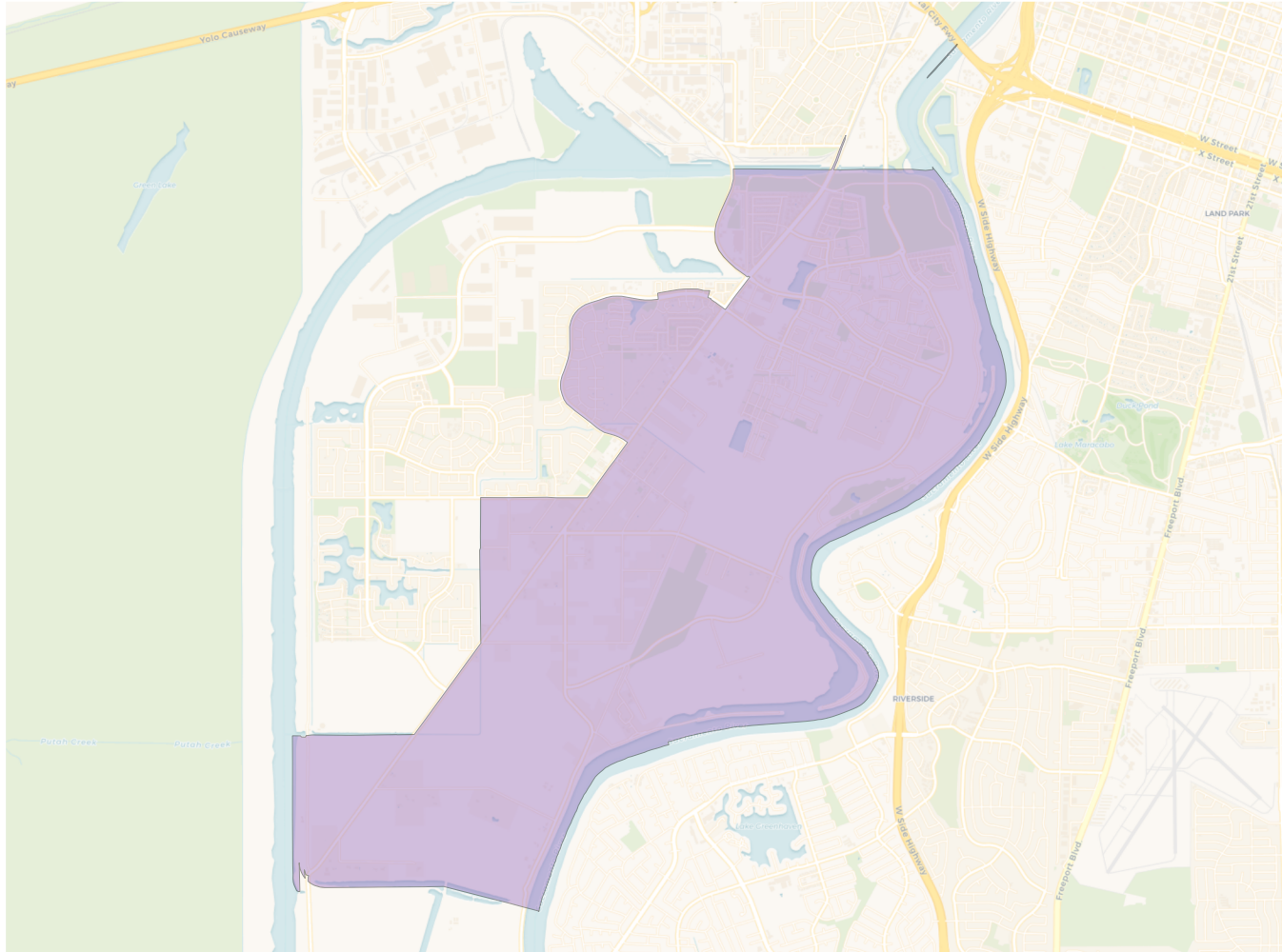


Citizen Voting Age Population

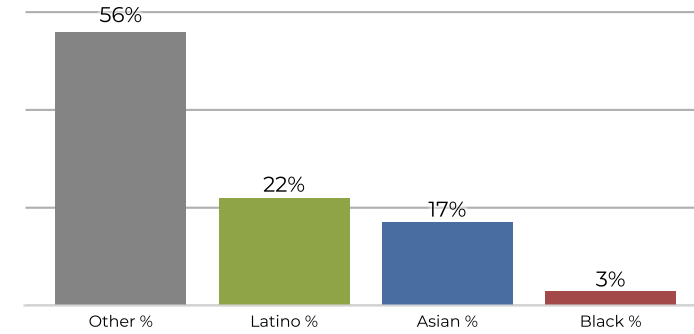


Population	Deviation	Deviation %	Other	Other %	Latino	Latino %	Asian	Asian %	Black	Black %
14,177	658	4.9%	7,302	51.5%	3,480	24.5%	2,492	17.6%	903	6.4%
Total CVAP	Other CVAP	Other CVAP %	Latino CVAP	Latino CVAP %	Asian CVAP	Asian CVAP %	Black CVAP	Black CVAP %		
8,908	5,520	62.0%	1,576	17.7%	1,179	13.2%	633	7.1%		

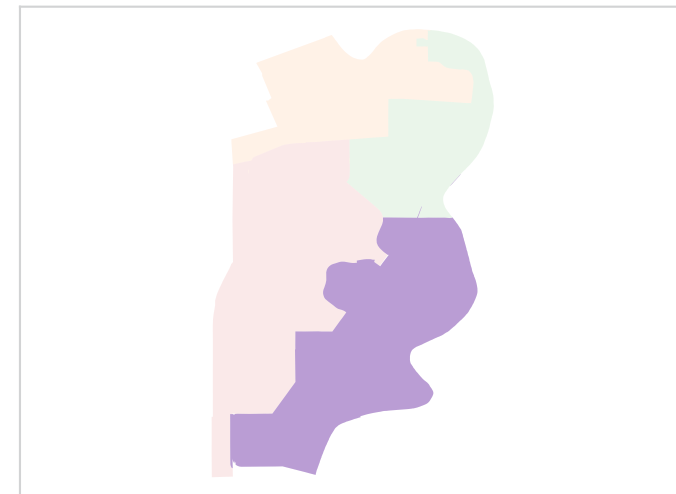
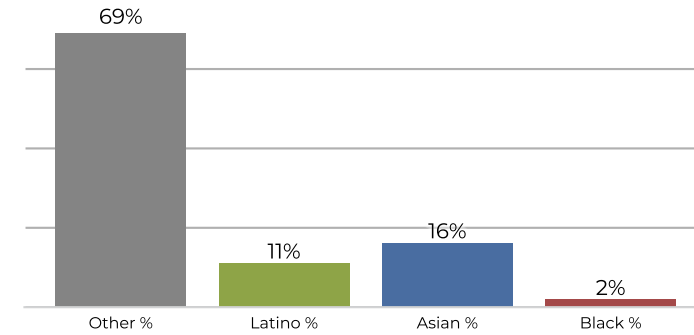
District 4



2020 Census



Citizen Voting Age Population



Population	Deviation	Deviation %	Other	Other %	Latino	Latino %	Asian	Asian %	Black	Black %
12,528	-991	-7.3%	7,068	56.4%	2,788	22.3%	2,234	17.8%	438	3.5%
Total CVAP	Other CVAP	Other CVAP %	Latino CVAP	Latino CVAP %	Asian CVAP	Asian CVAP %	Black CVAP	Black CVAP %		
8,242	5,692	69.1%	978	11.9%	1,348	16.4%	224	2.7%		